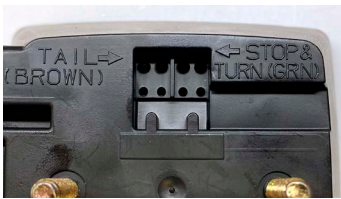


# Tech Bulletin



## Peterson “Push-In” Quick Wire Connections

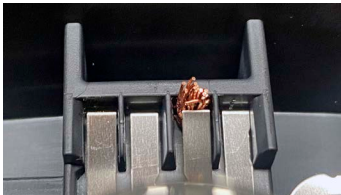
Some Peterson incandescent vehicle lights use a quick, simple, and ingenious type of wire connection you may not be familiar with. They are simple to use once you know a few important details.



The rear housing will have small round wire ports, usually in pairs. (This may be in addition to more traditional hardwired leads or screw terminals for some light functions.) These should be clearly labeled with the function and/or wire color for easy identification. In this photo, the wire ports are the larger holes at the top of the inset area.



To connect, strip about one-half inch of insulation from the wire. If you have multi-stranded wire, you may want to twist the strands together. Push the wire firmly into the connection port. There will likely be two ports for each function. In this case, it doesn't matter which port you use. **Work gloves and eye protection are recommended when working with wires.**



Once the wire is pushed in far enough, the bare wires will become trapped under a spring steel conductor. The angle of the metal blade allows it to tighten against the wires when tension is placed on the wire, keeping the wire in place and the electrical connection secure.

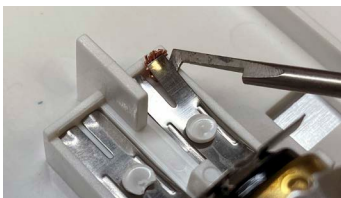


Should removal of the wire be necessary, insert a paperclip or other small tool into the small hole directly below wire. Apply *gentle* pressure while keeping tension on the wire. Press the paperclip in only as far as needed to release the wire. **Pushing too far could permanently bend the spring conductor so it can no longer grab and hold the wire.**



Some lights do not have the smaller release holes. In this case, wires are installed in the same manner as above, but removing the wire requires additional steps.

First, remove the lens from the front of the light.



With the front of the light removed, you will have access to the connector inside the light. Carefully insert a small pick or probe under the spring blade and pry upward *just enough* to release the wire. Again, be careful not to bend the spring connector further, as you may not be able to bend it back in its original position.

Form PM-TB-PushInPlugs-0922-Z