



PETERSON

Vehicle Lighting & Harness Systems

Intergrated Back-Up Lights

TWO LIGHTS IN ONE WITH INTEGRAL BACK-UP FUNCTION



LumenX[®]
I B L
INTEGRATED BACK-UP LIGHT

Peterson has expanded our award-winning, **LumenX[®]** line with the two innovative lights that integrate a DOT-legal, single diode, LED white back-up light right into standard 6" oval (M880-7 & M881-7) and 4" round (M882-7 & M883-7) red stop, turn and tail lights.

Both form factors are available in flange and grommet mount versions. Wiring sockets on the rear of the light housing accept silicone-sealed AMP style plugs for the most durable, weatherproof seal available.

These designs not only make efficient use of available space on the rear of the vehicle and provide an attractive, eye-catching appearance, but this innovative approach also saves labor and material costs by eliminating the need to purchase and install a separate back-up light.

These distinctive lights demonstrate once again how Peterson is continuing to lead the industry with innovations that solve real problems.

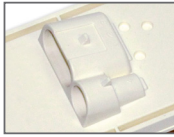
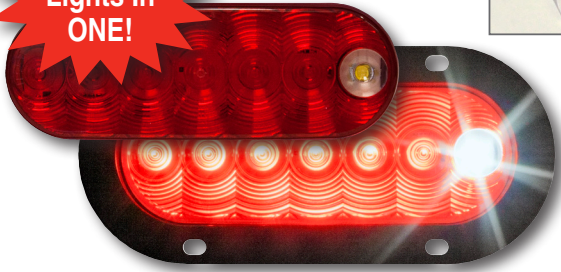
See detailed specifications on reverse.



PETERSON

Vehicle Lighting & Harness Systems

**TWO
Lights In
ONE!**



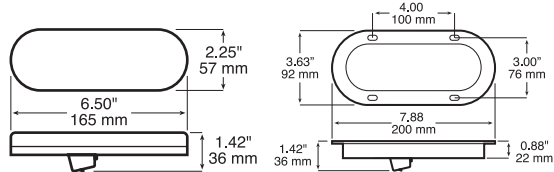
7
diodes

880-7 / 881-7 LumenX® LED Oval Combo Stop, Turn, Tail & Back-Up Light

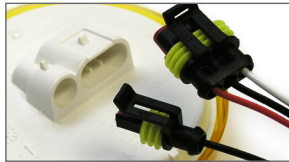


- Cyclops-style design integrates back-up light into stop/turn/tail light.
- Single bright white diodes meet legal back-up light req. used in pairs.
- Available w/integral AMP-compatible receptacles or hardwired leads.
- 880-7P hardwired with PL3 plug.
- 881-7 has flange welded to light, forming a single unit.
- 880K-7 kit includes light, grommet and AMP-style plug.
- 881K-7 includes flange version light and AMP-style plug.
- Available in 9-16 volt or 9-32 (-MV) operating ranges.
- Meets FMVSS 108 requirements in horizontal, vertical or any 360° position.

Order No.	Description	Pack	Std Carton
880K-7	KIT grommet mount kit	poly pack	6
880K-7-MV	KIT grommet mount kit, multi-volt	poly pack	6
881K-7	KIT flange mount kit	poly pack	6
881K-7-MV	KIT flange mount kit, multi-volt	poly pack	6
M880-7	grommet mount	mfg. pack	50
M880-7-MV	grommet mount, multi-volt	mfg. pack	50
M880-7P	grommet mount with PL3 plug	mfg. pack	50
M880-PL3	grommet, hardwired, twin PL3s	mfg. pack	50
M881-7	flange mount	mfg. pack	50
M881-7-MV	flange mount, multi-volt	mfg. pack	50
M881-7P	flange mount, hardwired PL3 plug	mfg. pack	50
421-18	grommet	poly pack	12
B421-18	grommet	mfg. pack	100
417-49	plug, 3-wire	poly pack	6
B417-49	plug, 3-wire	mfg. pack	100
880-49	plug, single lead	poly pack	6
B880-49	plug, single lead	mfg. pack	100



**TWO
Lights In
ONE!**

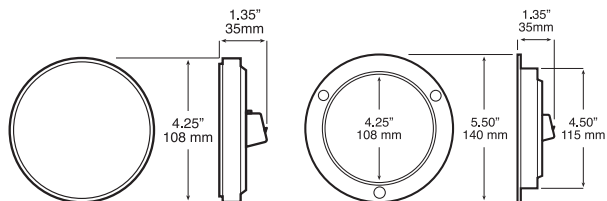


7
diodes



882-7 / 883-7 LumenX® LED 4" Round Combo Stop, Turn, Tail & Back-Up Light

- Cyclops-style design integrates back-up light into stop/turn/tail light.
- Single bright white diodes meet legal back-up light req. used in pairs.
- Accepts AMP-compatible connectors for all functions.
- 882-7P & 883-7P hardwired with PL3 plug.
- 883-7 has flange welded to light, forming a single unit.
- 882K-7 kit includes light, grommet and AMP-style plug.
- 883K-7 includes flange version light and AMP-style plug.
- Available in 9-16 volt or 9-32 (-MV) operating ranges.
- Does not require "Top" positioning to meet FMVSS 108 standard.



Order No.	Description	Pack	Std Carton
882K-7	KIT grommet mount kit	poly pack	6
882K-7-MV	KIT grommet mount kit, multi-volt	poly pack	6
883K-7	KIT flange mount kit	poly pack	6
883K-7-MV	KIT grommet mount kit, multi-volt	poly pack	6
M882-7	grommet mount	mfg. pack	50
M882-7-MV	grommet mount, multi-volt	mfg. pack	50
M882-7P	grommet mount with PL3 plug	mfg. pack	50
M883-7	flange mount	mfg. pack	50
M883-7-MV	grommet mount, multi-volt	mfg. pack	50
M883-7P	flange mount with PL3 plug	mfg. pack	50
426-18	grommet	poly pack	12
B426-18	grommet	mfg. pack	100
417-49	plug, 3-wire	poly pack	6
B417-49	plug, 3-wire	mfg. pack	100
880-49	plug, single lead	poly pack	6
B880-49	plug, single lead	mfg. pack	100

Integrated Back-Up Light-0521-B