



TROUBLESHOOTING GUIDE

Includes

Converter Dollies

28' Straight & Drop Frame Trailers

53' Straight Frame Trailers



PETERSON

With ***Maxi-Seal®*** Technology

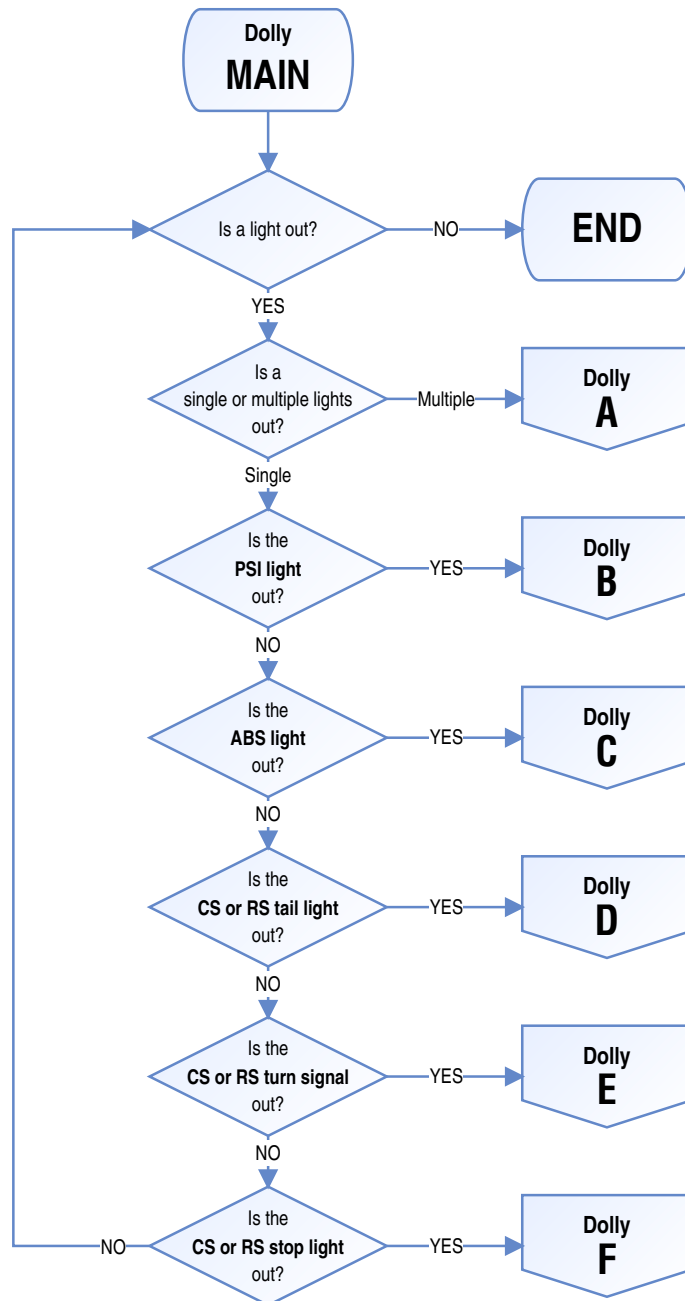
TROUBLESHOOTING GUIDE

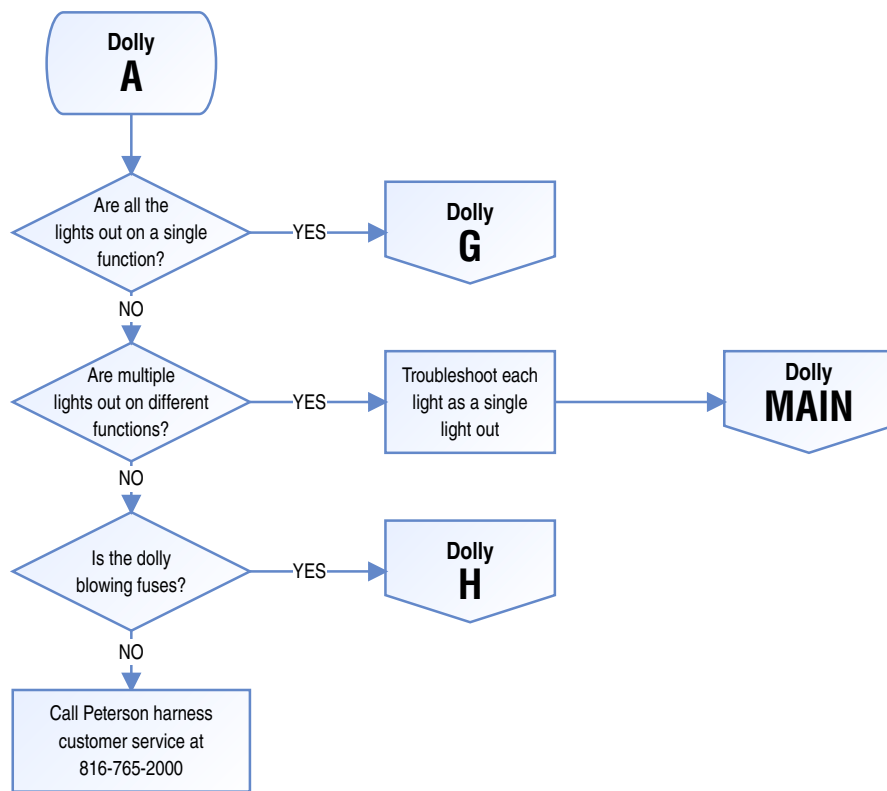
Converter Dollies	1
28' Straight & Drop Frame Trailers	11
53' Straight Frame Trailers	25

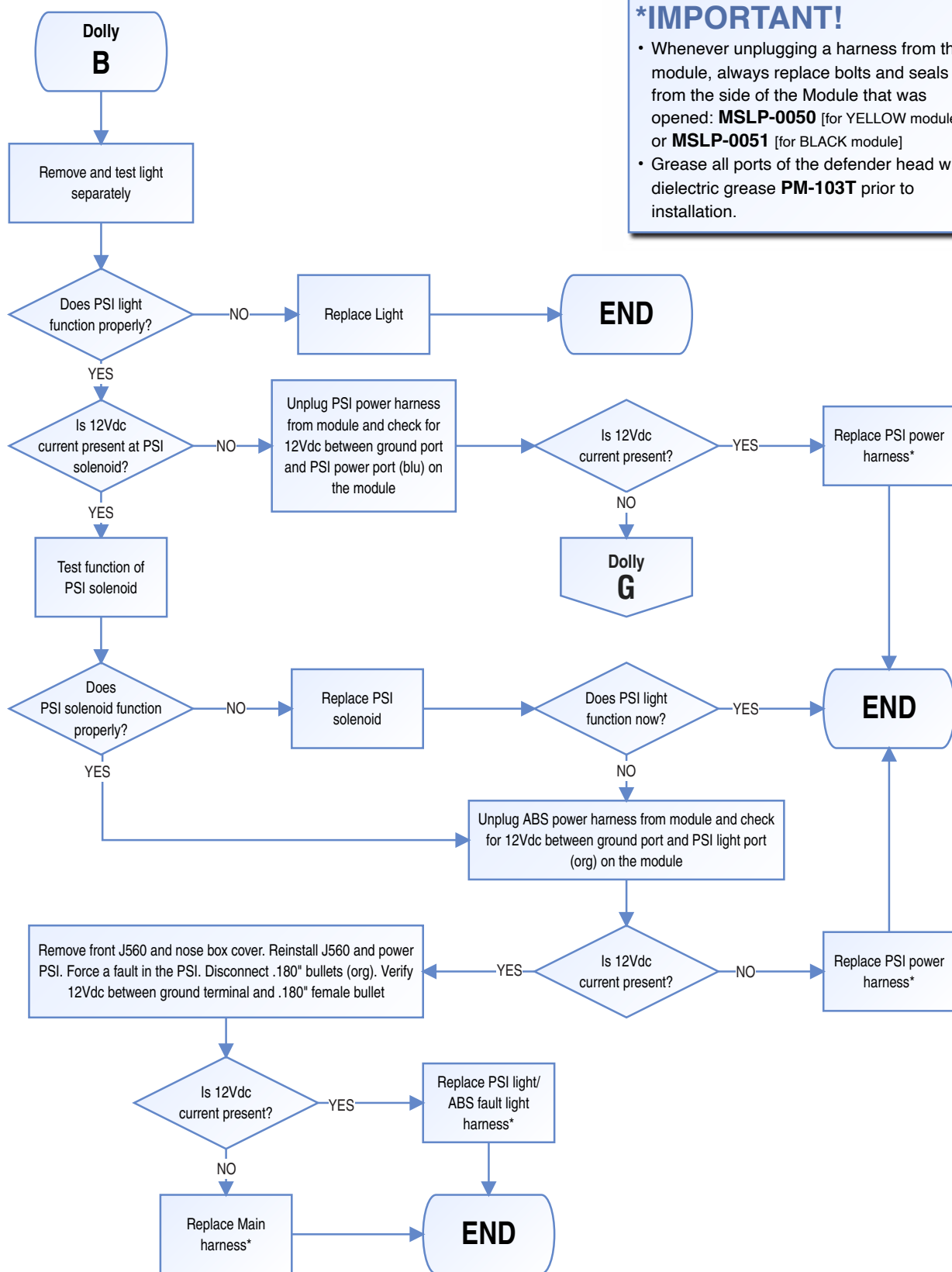


Section 1

Troubleshooting Guide for Converter Dollies

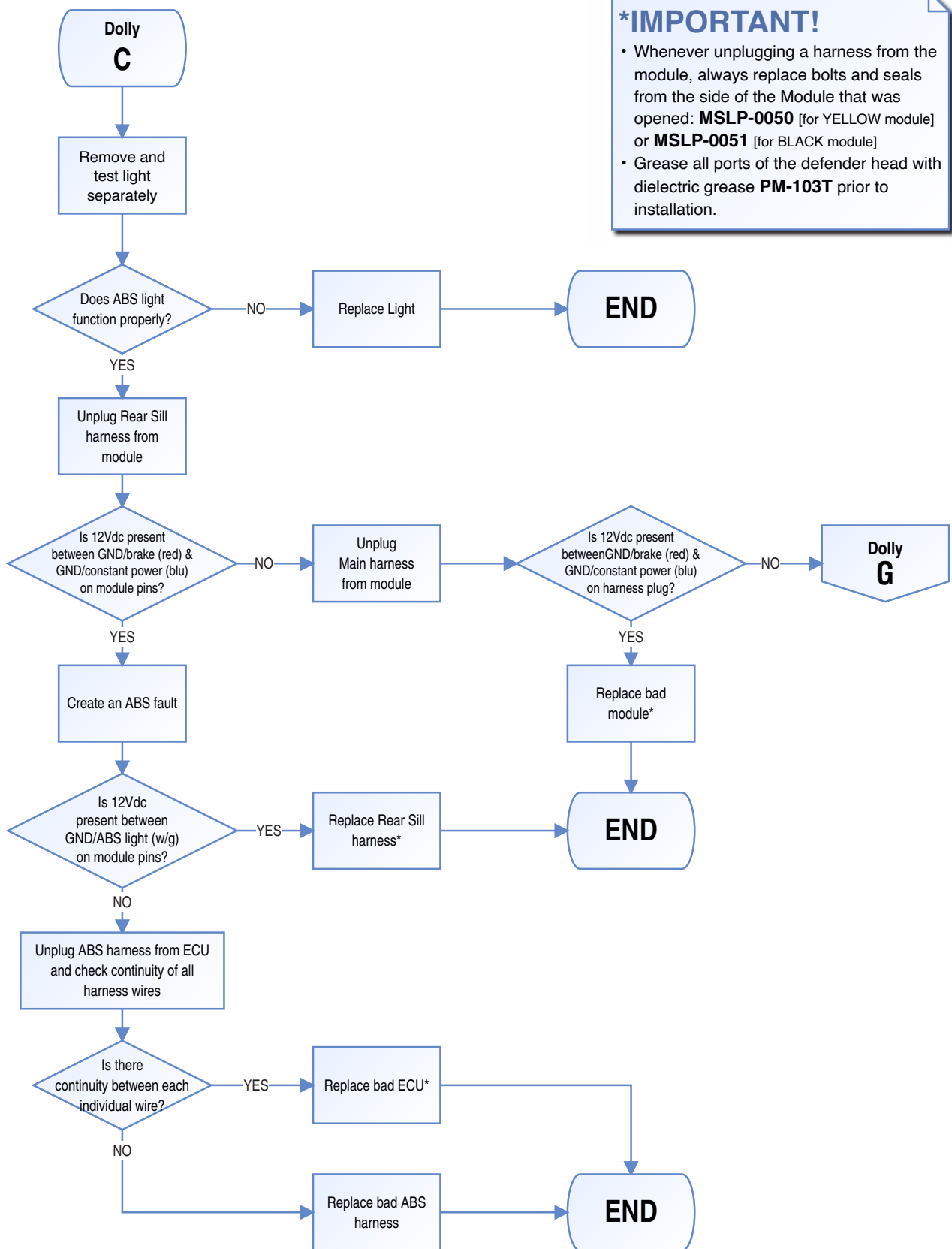






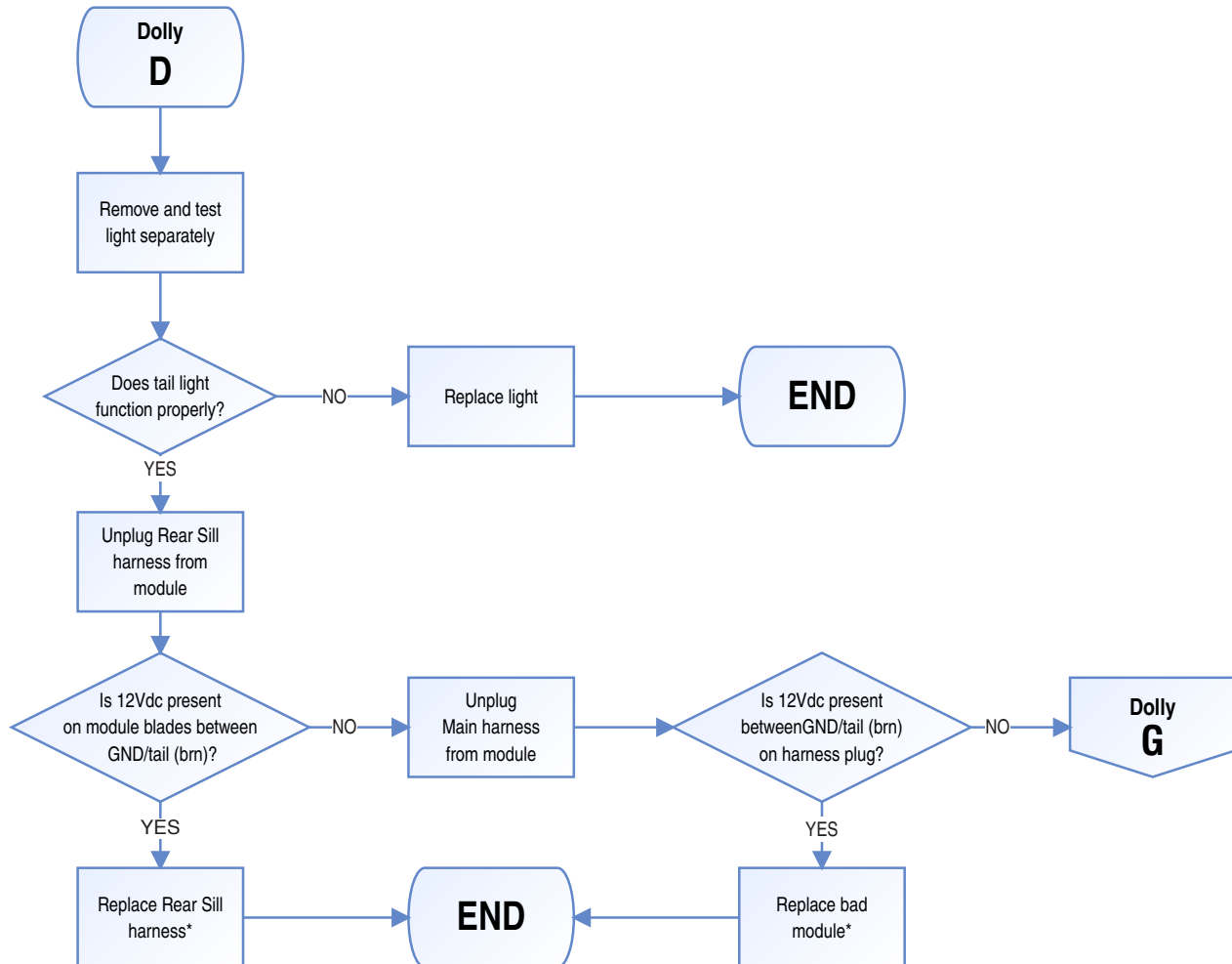
*IMPORTANT!

- Whenever unplugging a harness from the module, always replace bolts and seals from the side of the Module that was opened: **MSLP-0050** [for YELLOW module] or **MSLP-0051** [for BLACK module]
- Grease all ports of the defender head with dielectric grease **PM-103T** prior to installation.



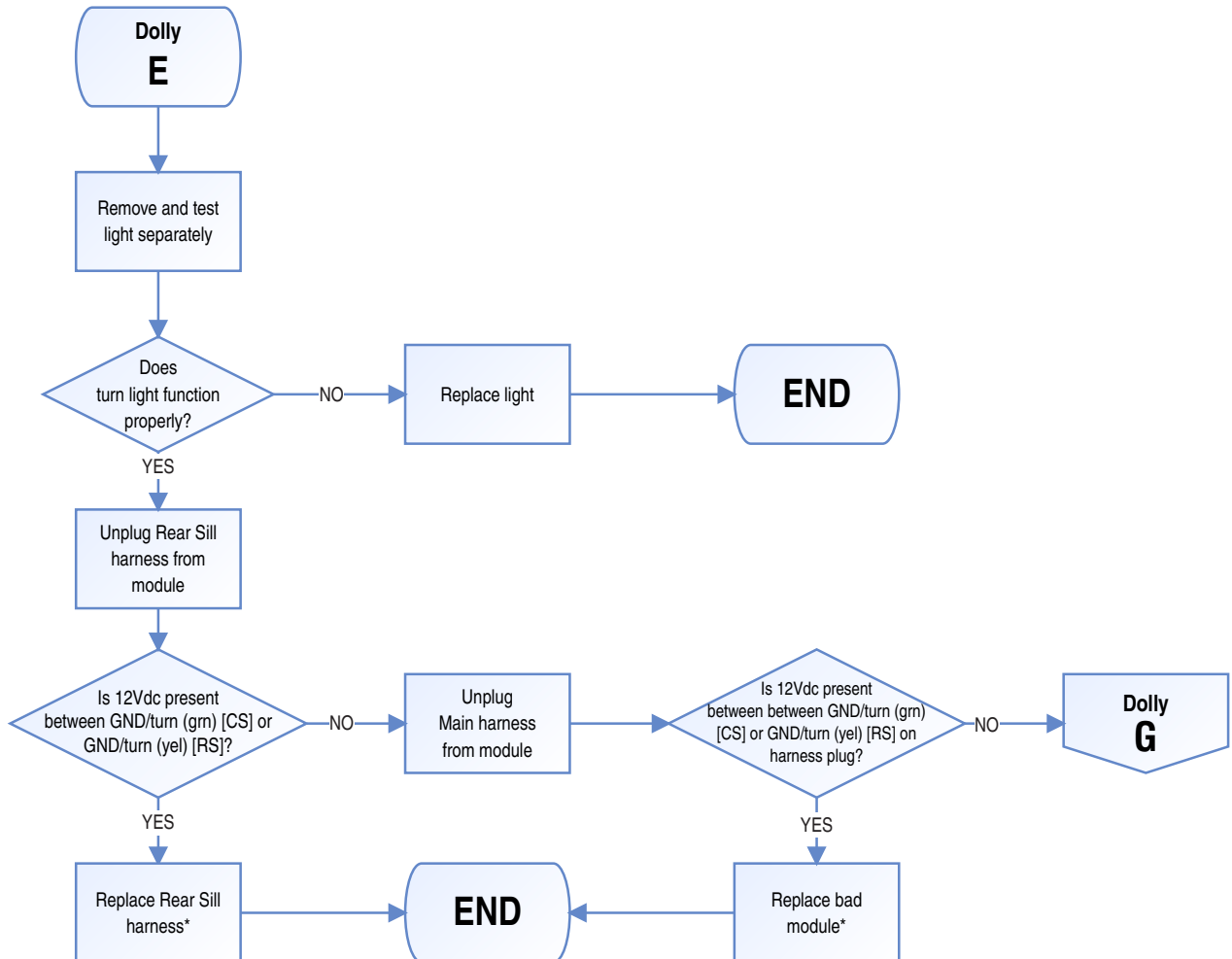
***IMPORTANT!**

- Whenever unplugging a harness from the module, always replace bolts and seals from the side of the Module that was opened: **MSLP-0050** [for YELLOW module] or **MSLP-0051** [for BLACK module]
- Grease all ports of the defender head with dielectric grease **PM-103T** prior to installation.



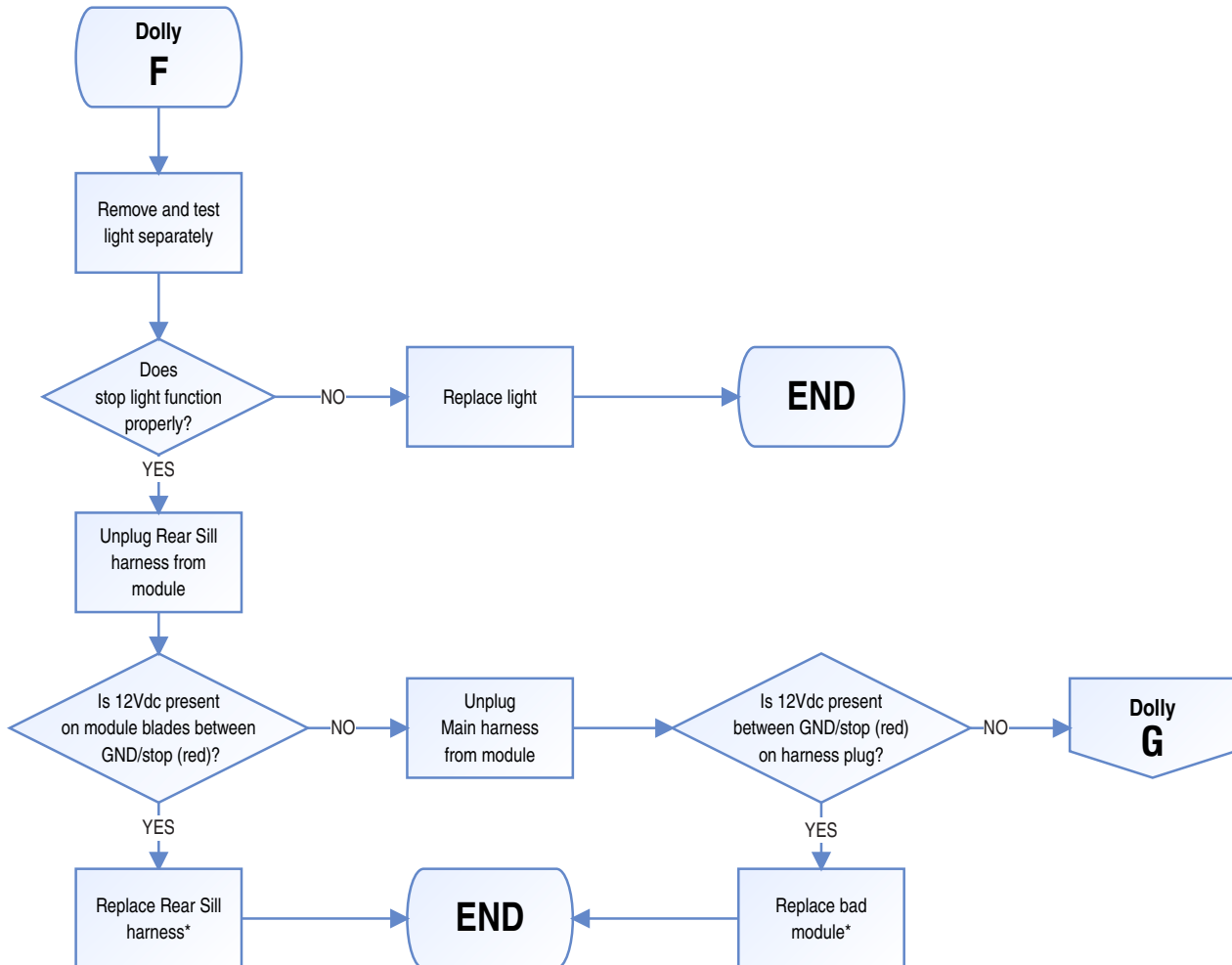
*IMPORTANT!

- Whenever unplugging a harness from the module, always replace bolts and seals from the side of the Module that was opened: **MSLP-0050** [for YELLOW module] or **MSLP-0051** [for BLACK module]
- Grease all ports of the defender head with dielectric grease **PM-103T** prior to installation.



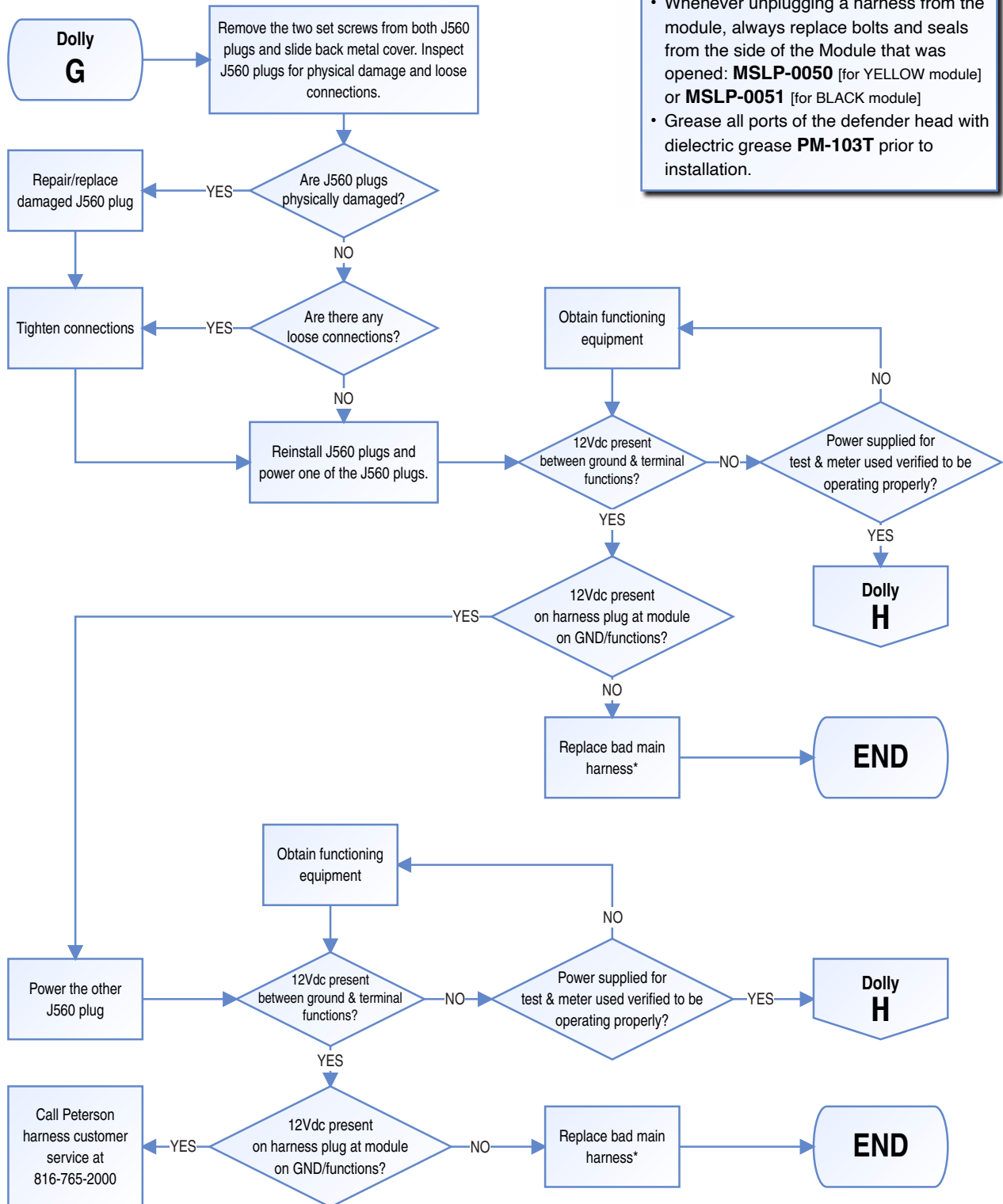
***IMPORTANT!**

- Whenever unplugging a harness from the module, always replace bolts and seals from the side of the Module that was opened: **MSLP-0050** [for YELLOW module] or **MSLP-0051** [for BLACK module]
- Grease all ports of the defender head with dielectric grease **PM-103T** prior to installation.



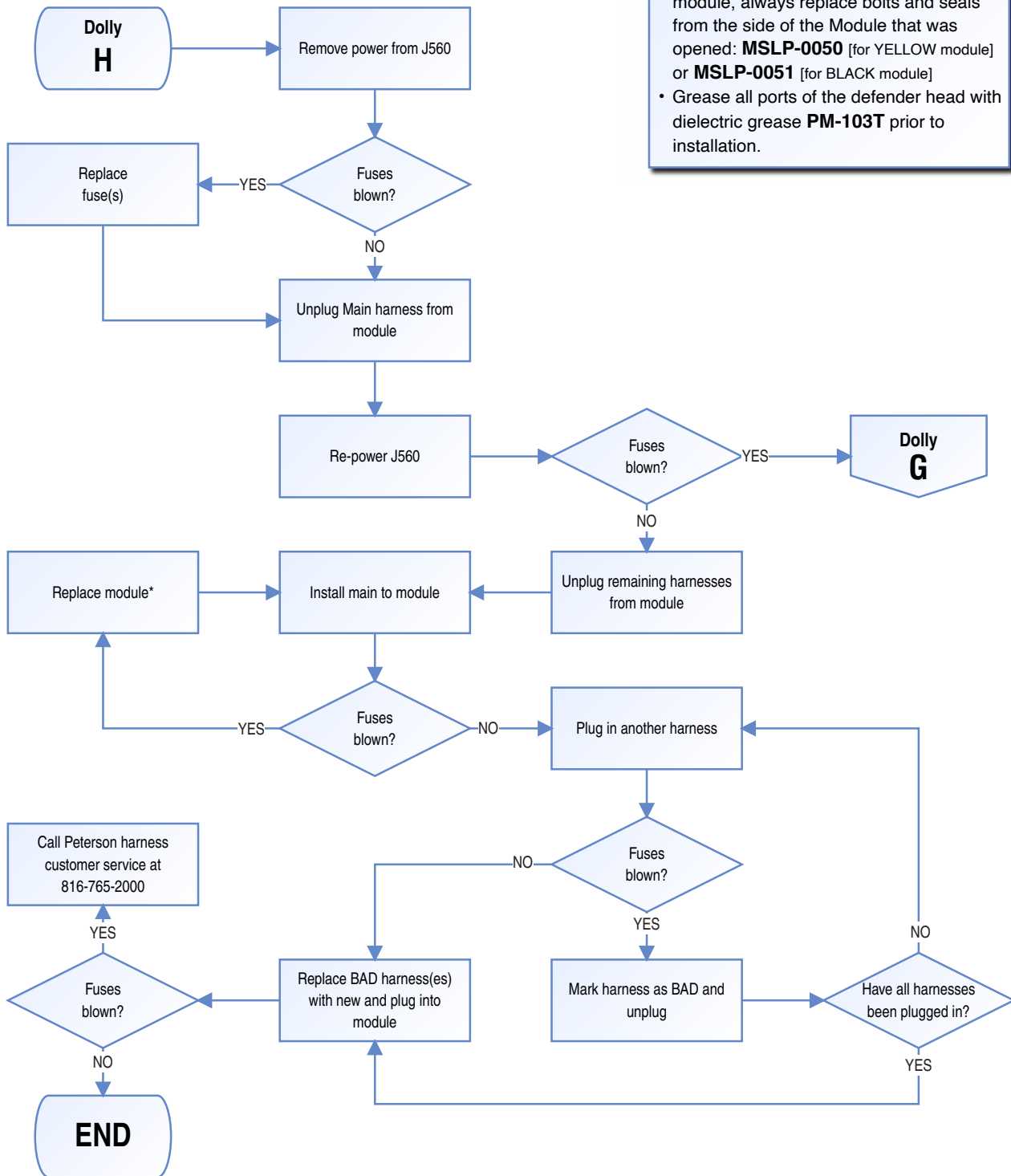
*IMPORTANT!

- Whenever unplugging a harness from the module, always replace bolts and seals from the side of the Module that was opened: **MSLP-0050** [for YELLOW module] or **MSLP-0051** [for BLACK module]
- Grease all ports of the defender head with dielectric grease **PM-103T** prior to installation.



*IMPORTANT!

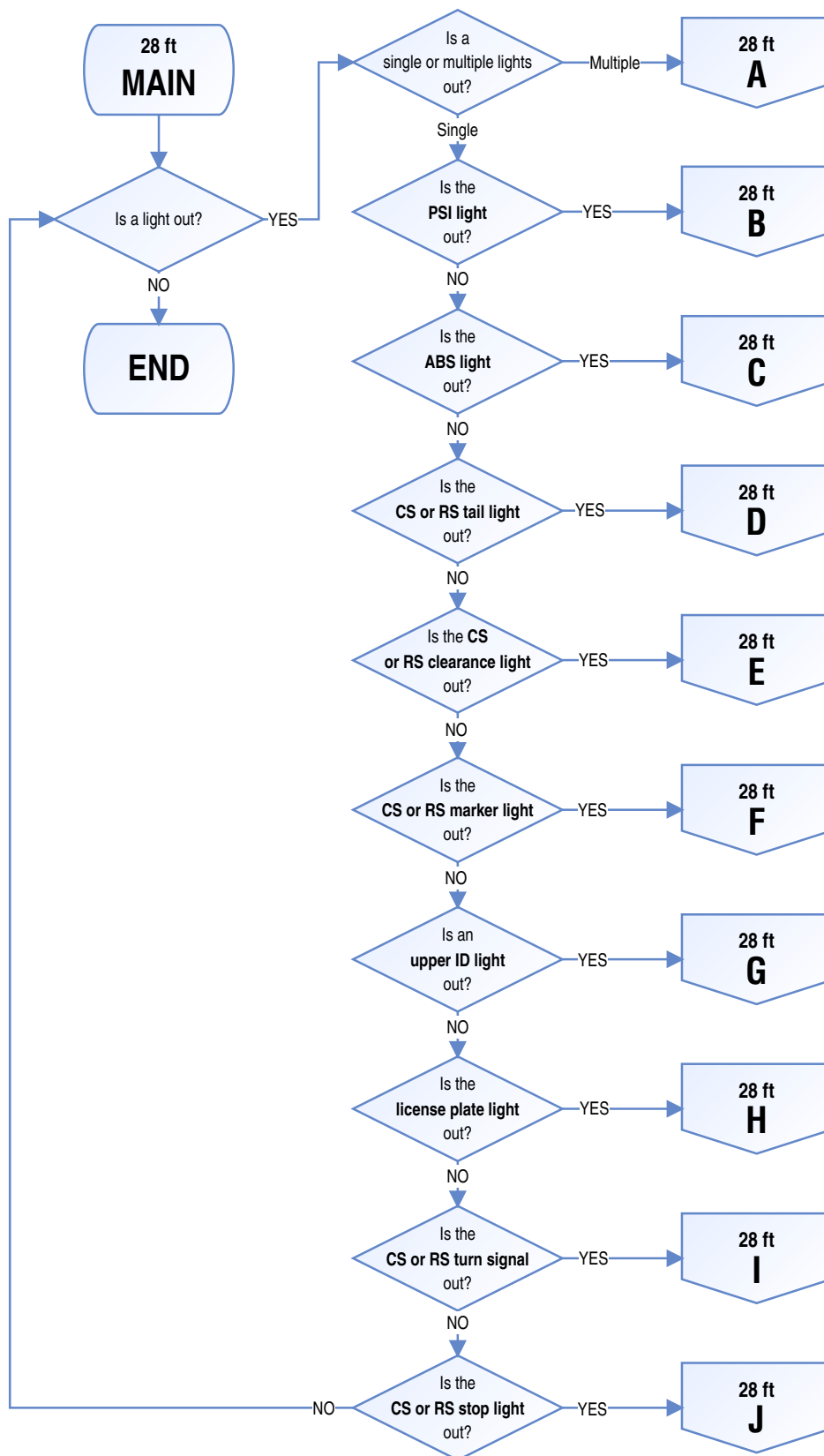
- Whenever unplugging a harness from the module, always replace bolts and seals from the side of the Module that was opened: **MSLP-0050** [for YELLOW module] or **MSLP-0051** [for BLACK module]
- Grease all ports of the defender head with dielectric grease **PM-103T** prior to installation.

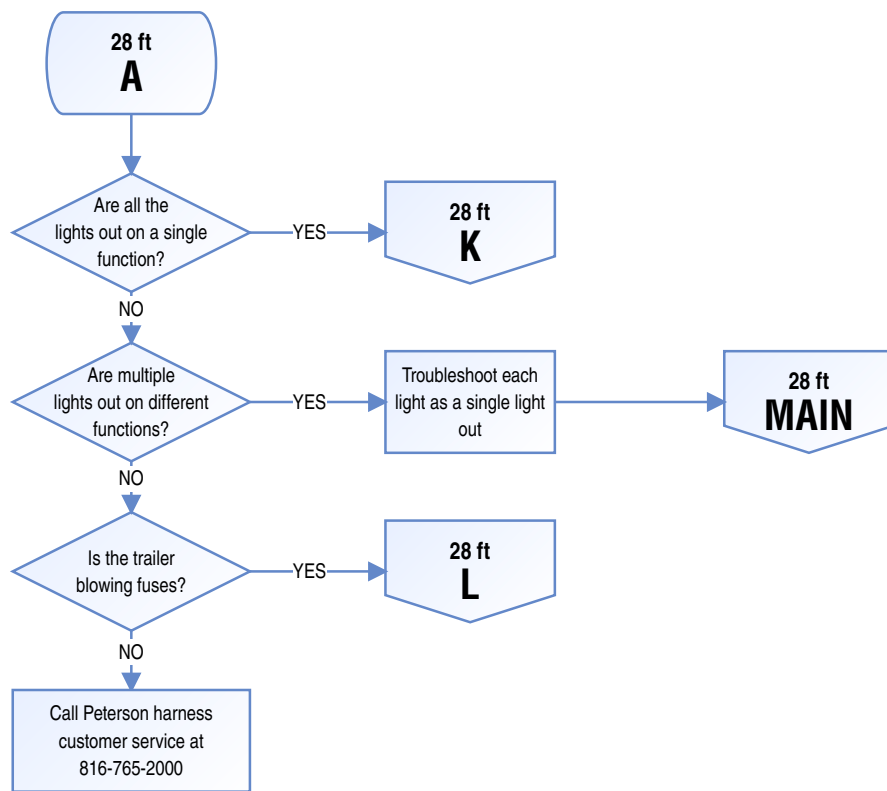


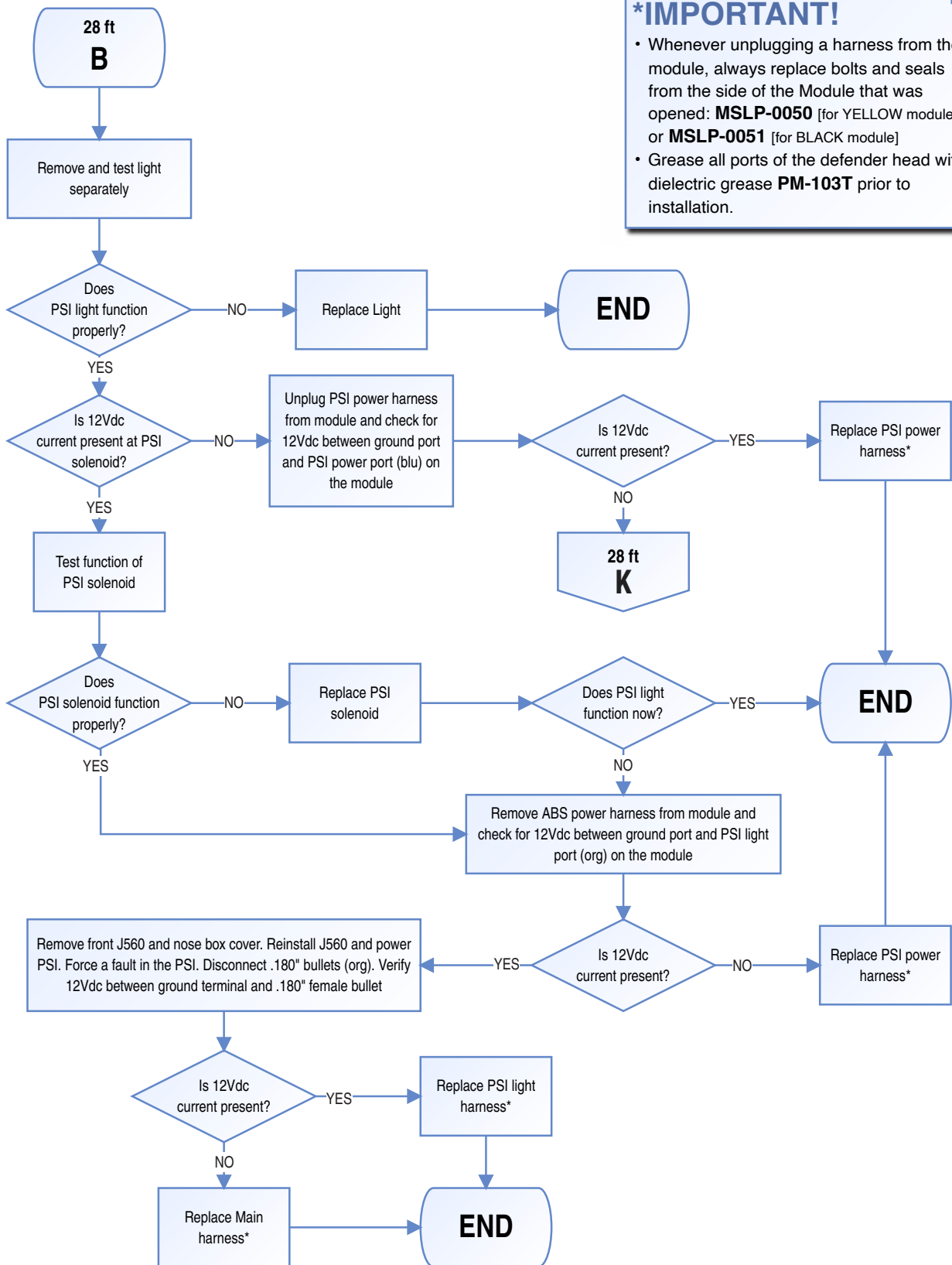


Section 2

Troubleshooting Guide for 28' Drop Frame & 28' Straight Frame Trailers

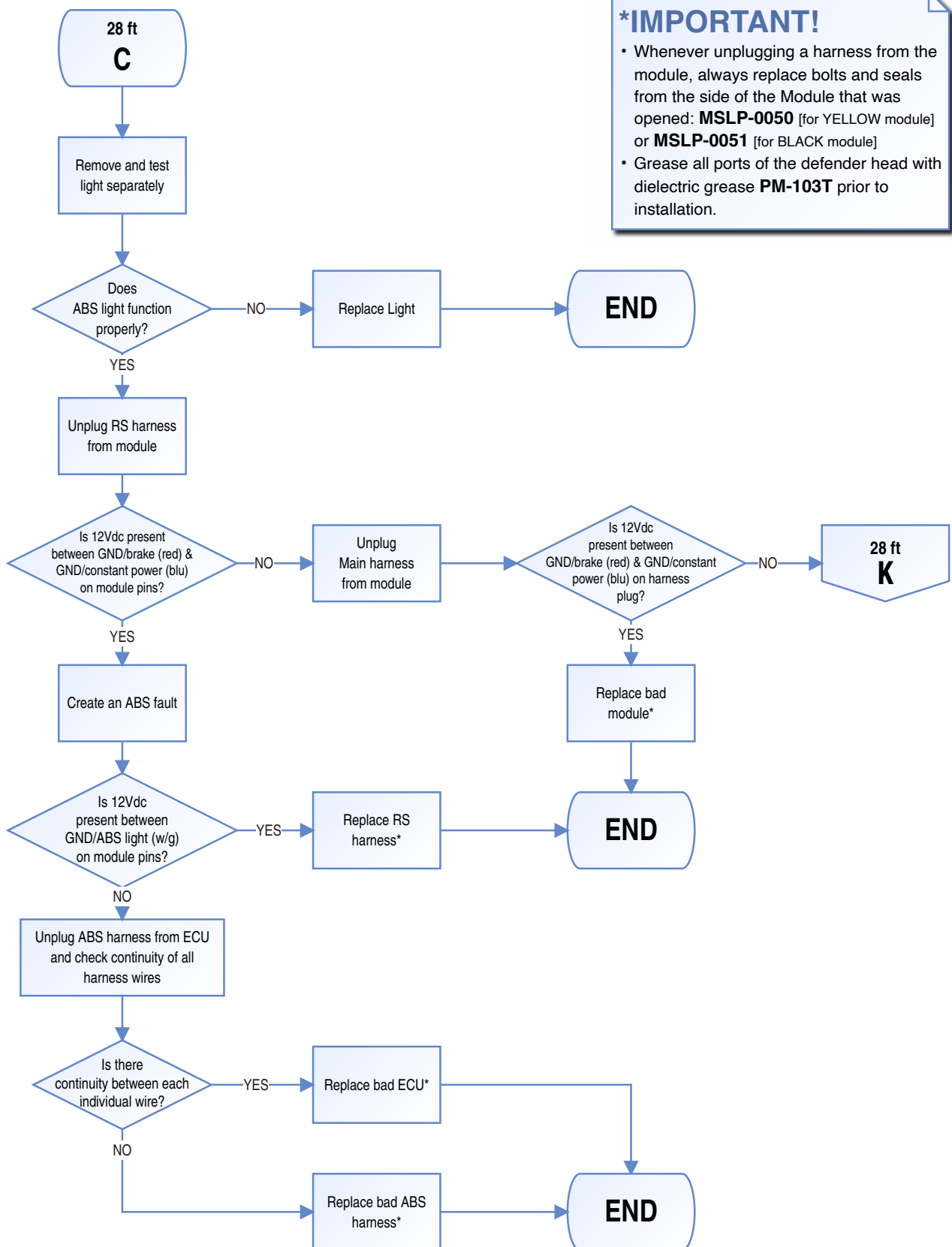






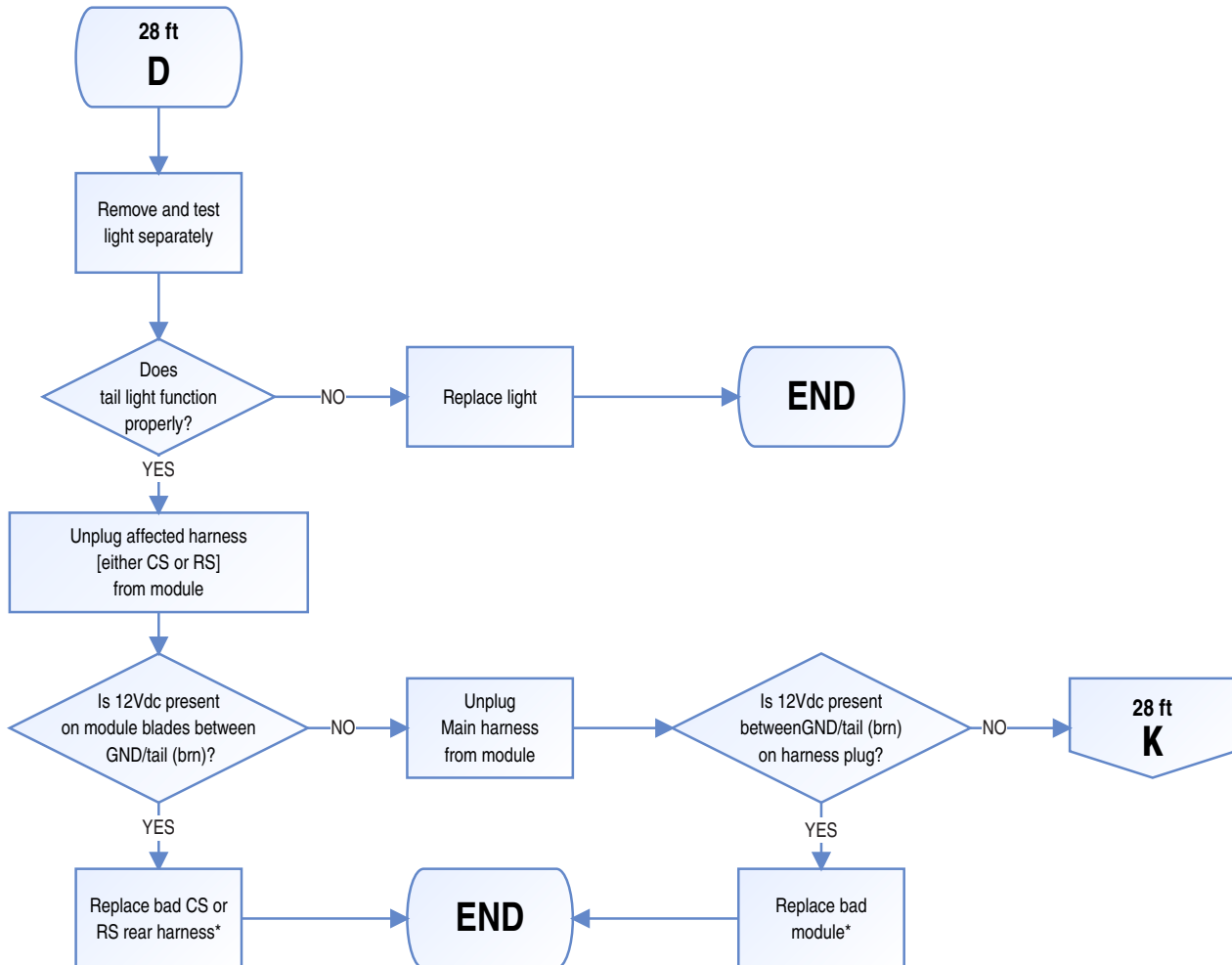
*IMPORTANT!

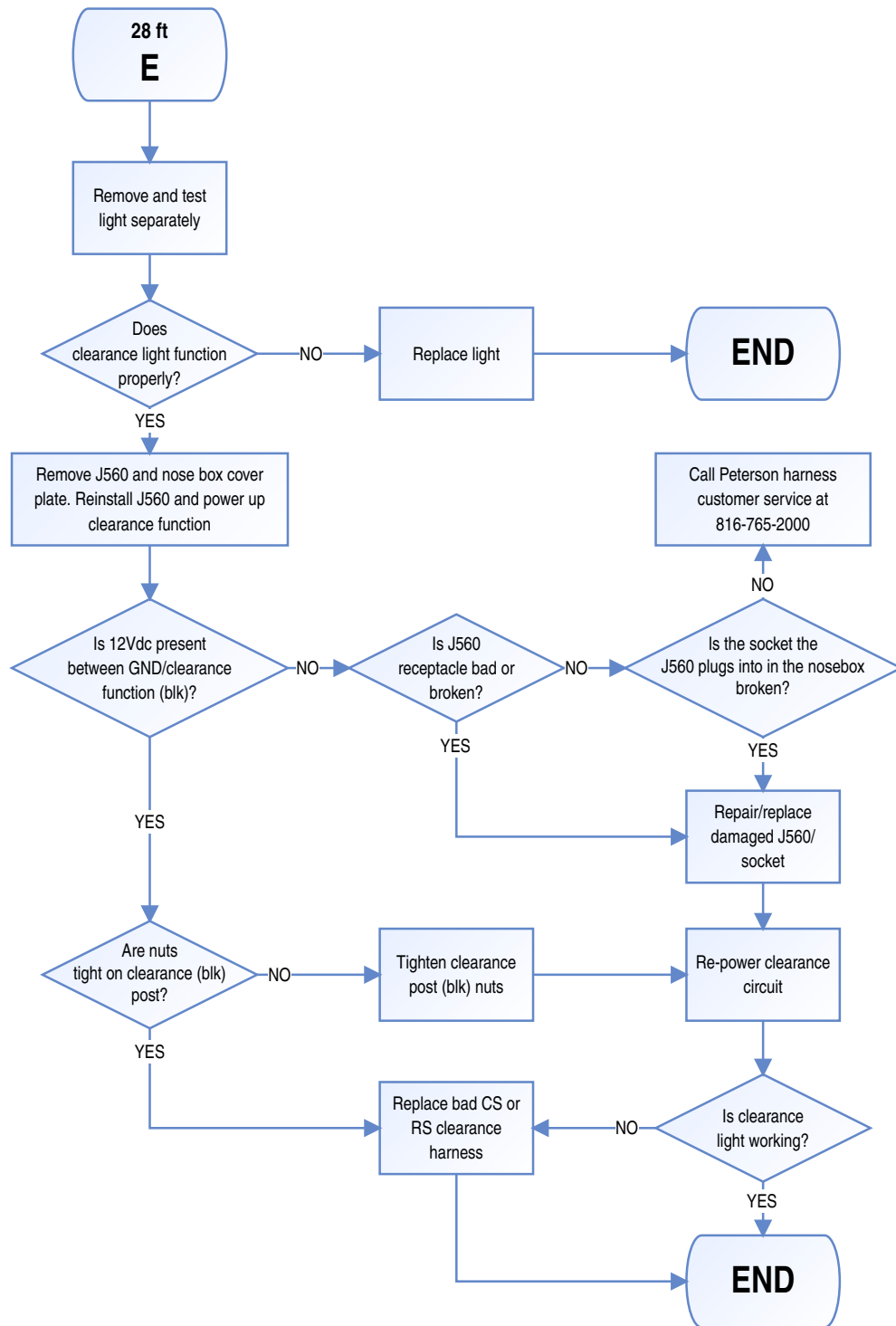
- Whenever unplugging a harness from the module, always replace bolts and seals from the side of the Module that was opened: **MSLP-0050** [for YELLOW module] or **MSLP-0051** [for BLACK module]
- Grease all ports of the defender head with dielectric grease **PM-103T** prior to installation.



*IMPORTANT!

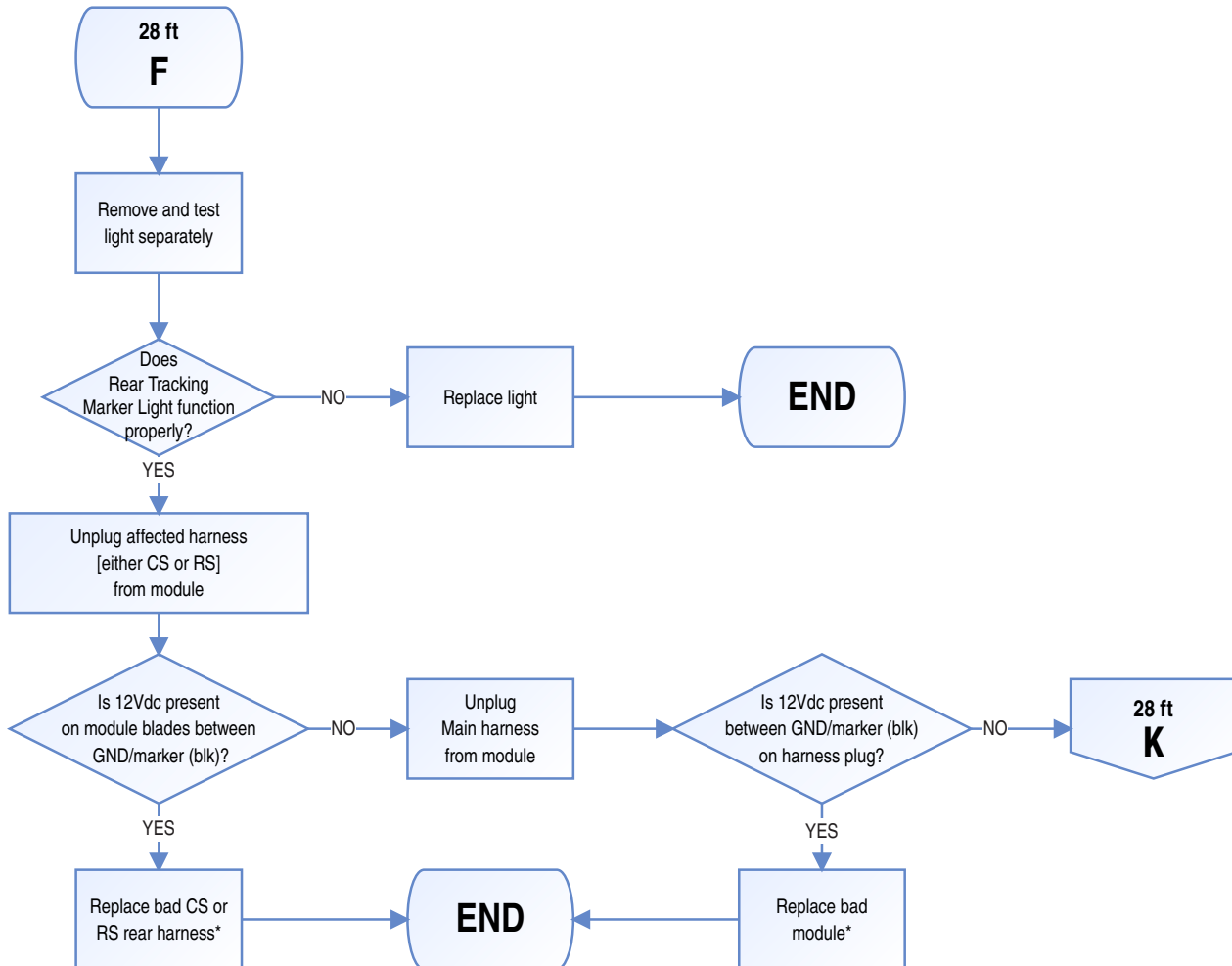
- Whenever unplugging a harness from the module, always replace bolts and seals from the side of the Module that was opened: **MSLP-0050** [for YELLOW module] or **MSLP-0051** [for BLACK module]
- Grease all ports of the defender head with dielectric grease **PM-103T** prior to installation.





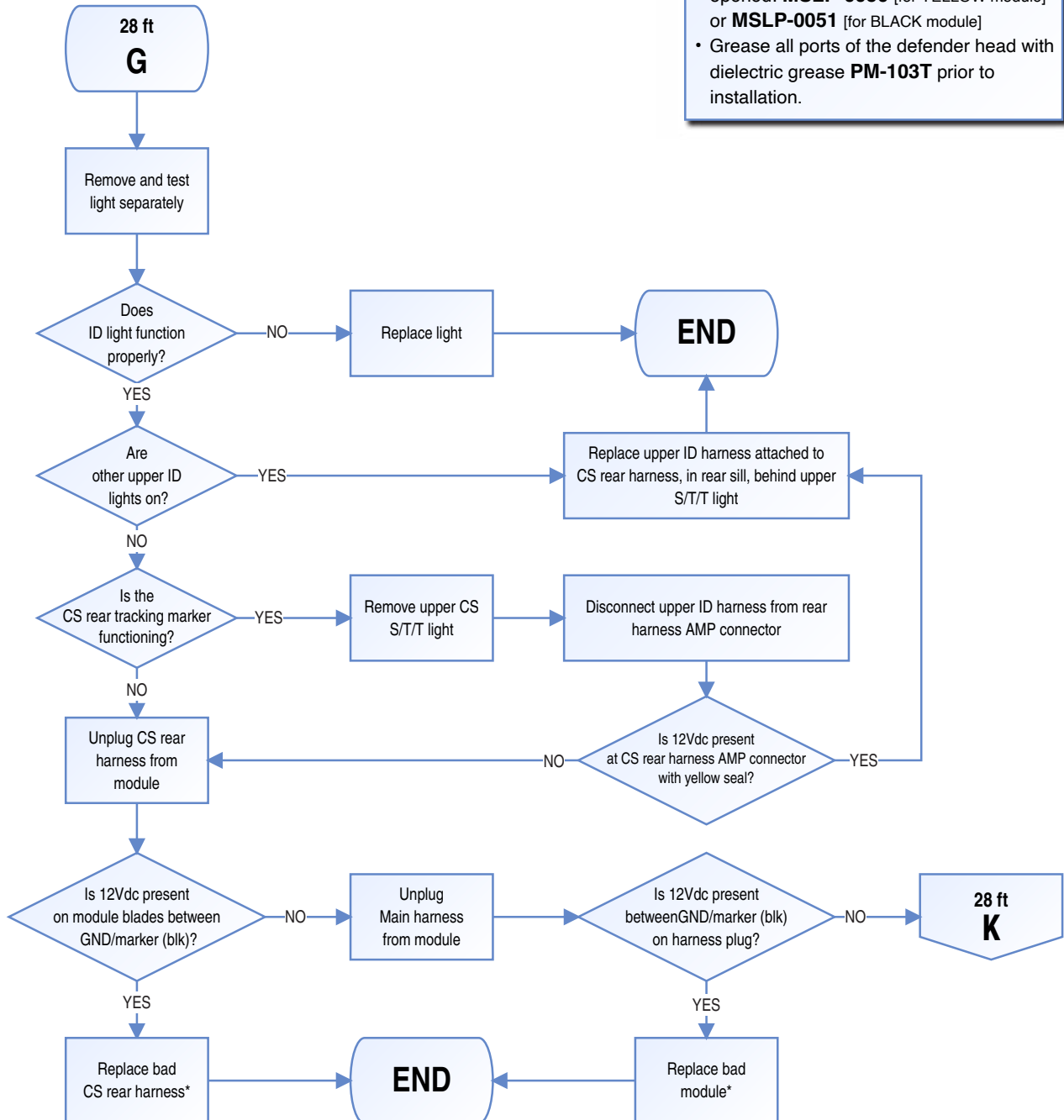
*IMPORTANT!

- Whenever unplugging a harness from the module, always replace bolts and seals from the side of the Module that was opened: **MSLP-0050** [for YELLOW module] or **MSLP-0051** [for BLACK module]
- Grease all ports of the defender head with dielectric grease **PM-103T** prior to installation.



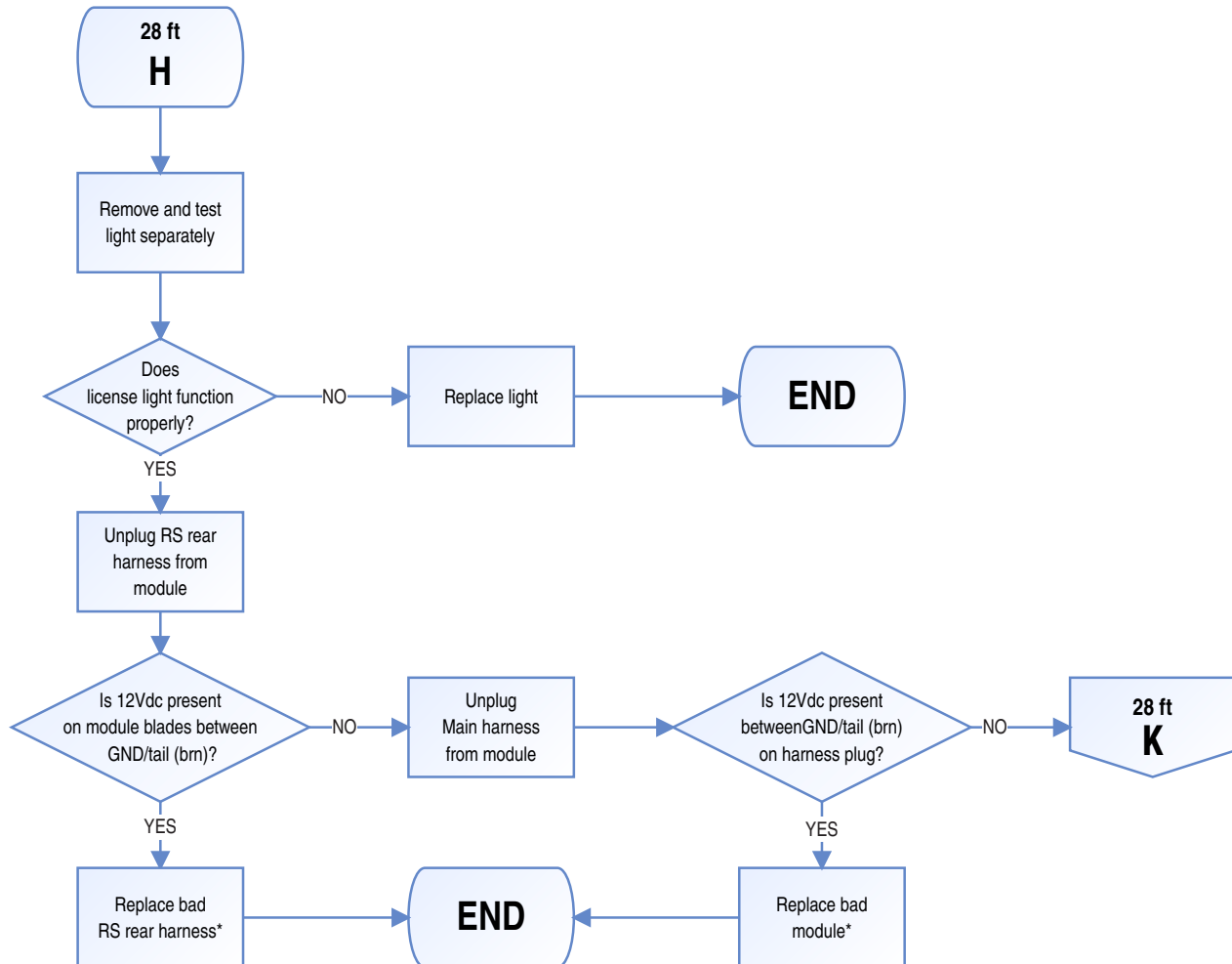
*IMPORTANT!

- Whenever unplugging a harness from the module, always replace bolts and seals from the side of the Module that was opened: **MSLP-0050** [for YELLOW module] or **MSLP-0051** [for BLACK module]
- Grease all ports of the defender head with dielectric grease **PM-103T** prior to installation.



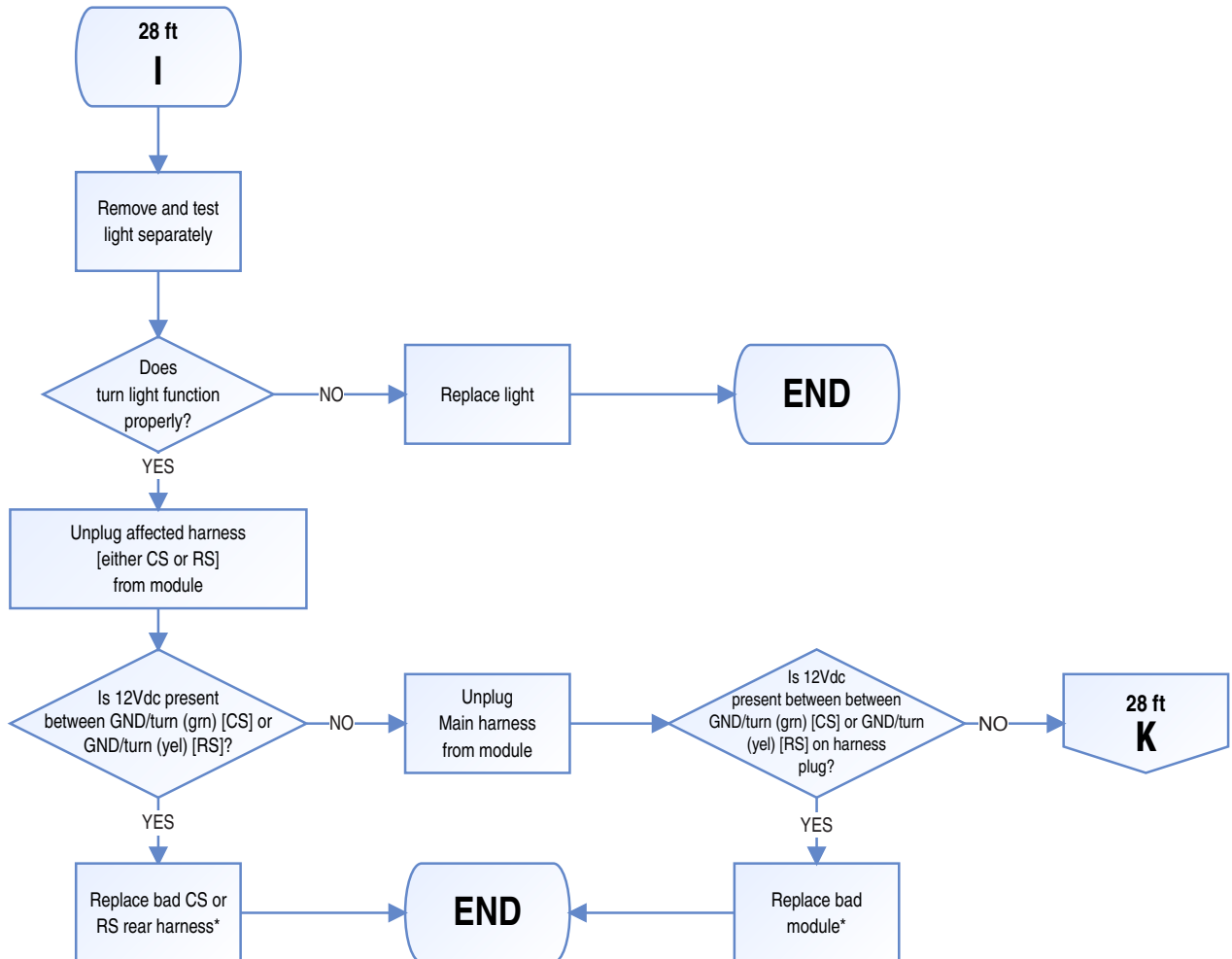
*IMPORTANT!

- Whenever unplugging a harness from the module, always replace bolts and seals from the side of the Module that was opened: **MSLP-0050** [for YELLOW module] or **MSLP-0051** [for BLACK module]
- Grease all ports of the defender head with dielectric grease **PM-103T** prior to installation.



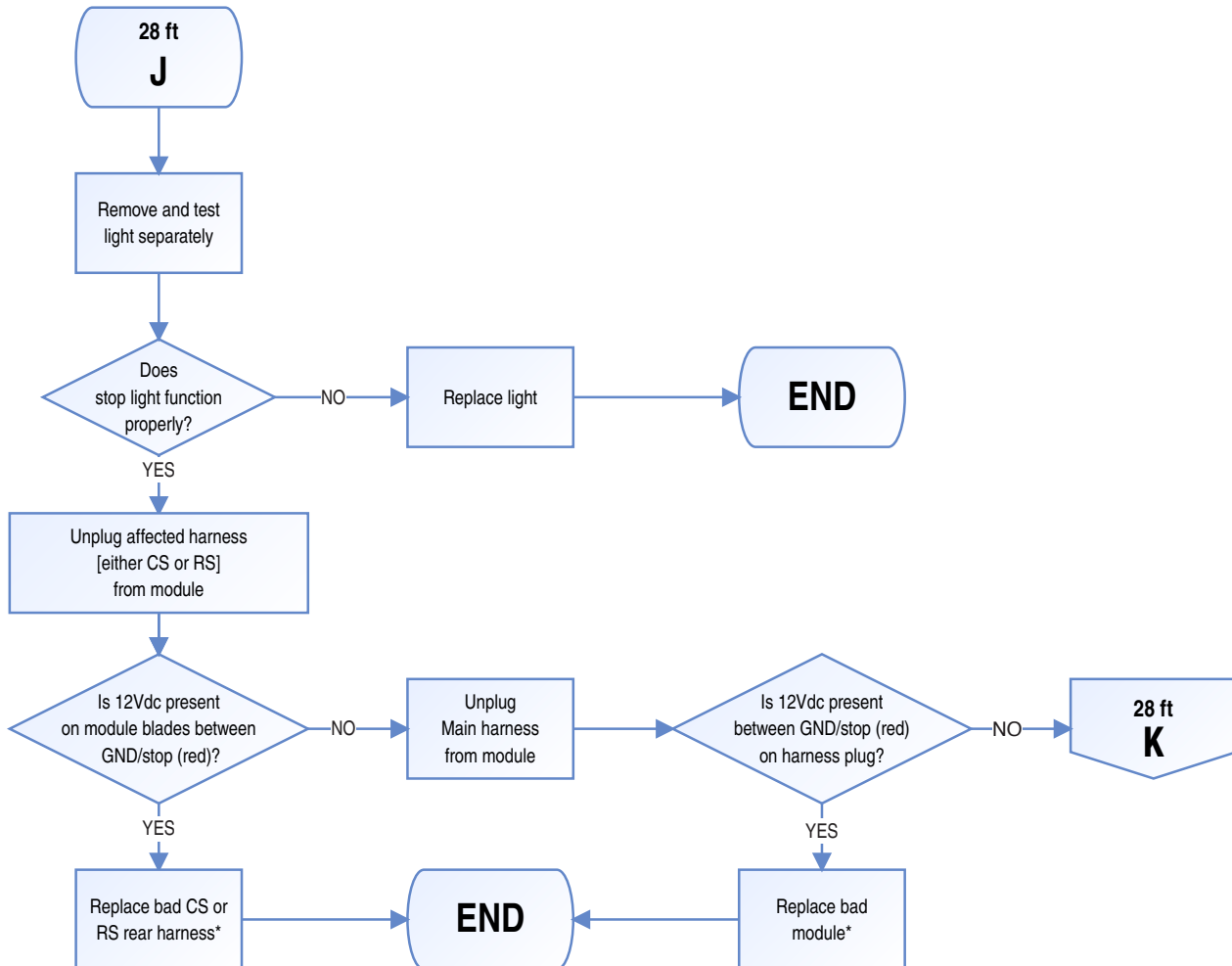
*IMPORTANT!

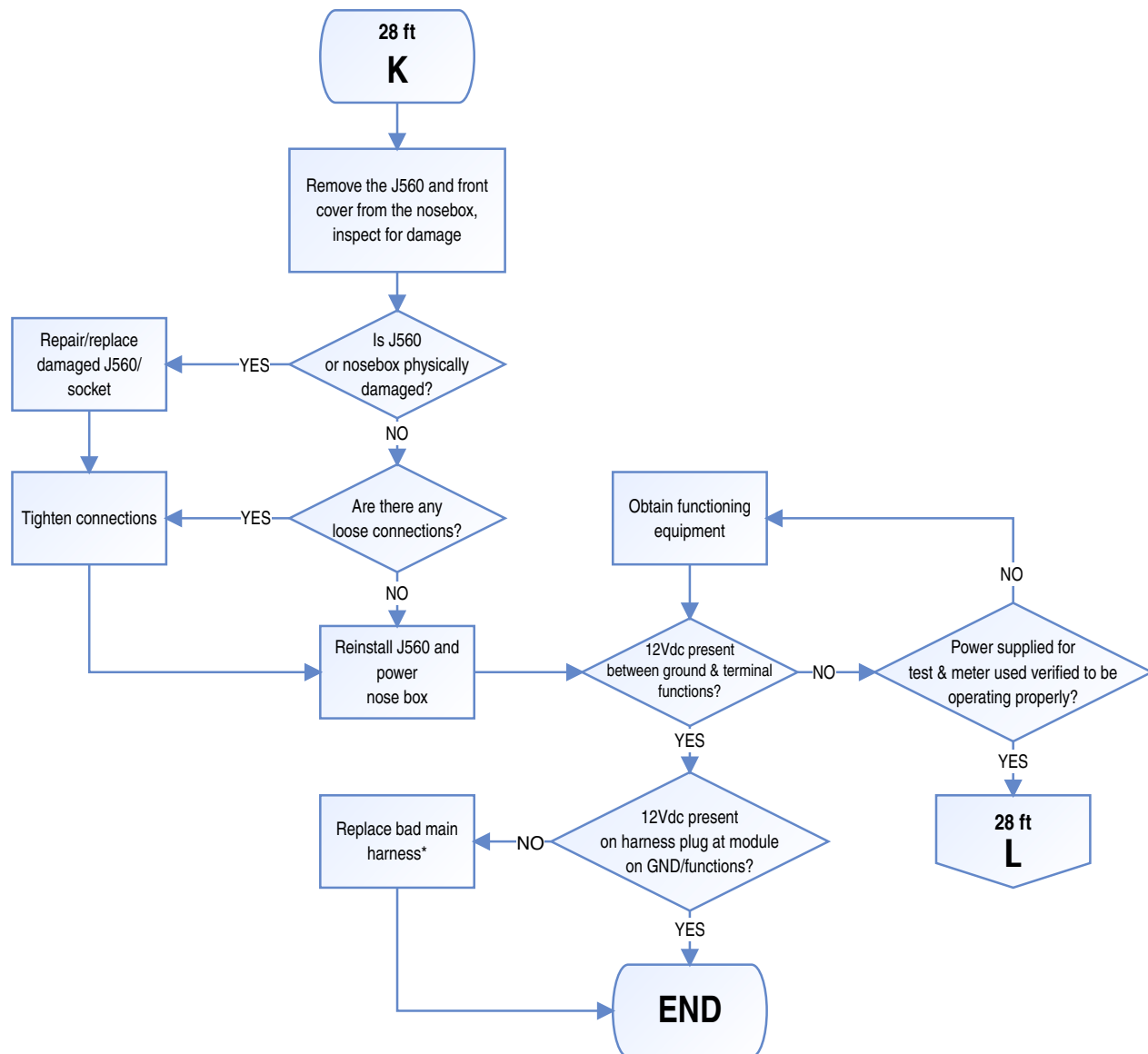
- Whenever unplugging a harness from the module, always replace bolts and seals from the side of the Module that was opened: **MSLP-0050** [for YELLOW module] or **MSLP-0051** [for BLACK module]
- Grease all ports of the defender head with dielectric grease **PM-103T** prior to installation.



*IMPORTANT!

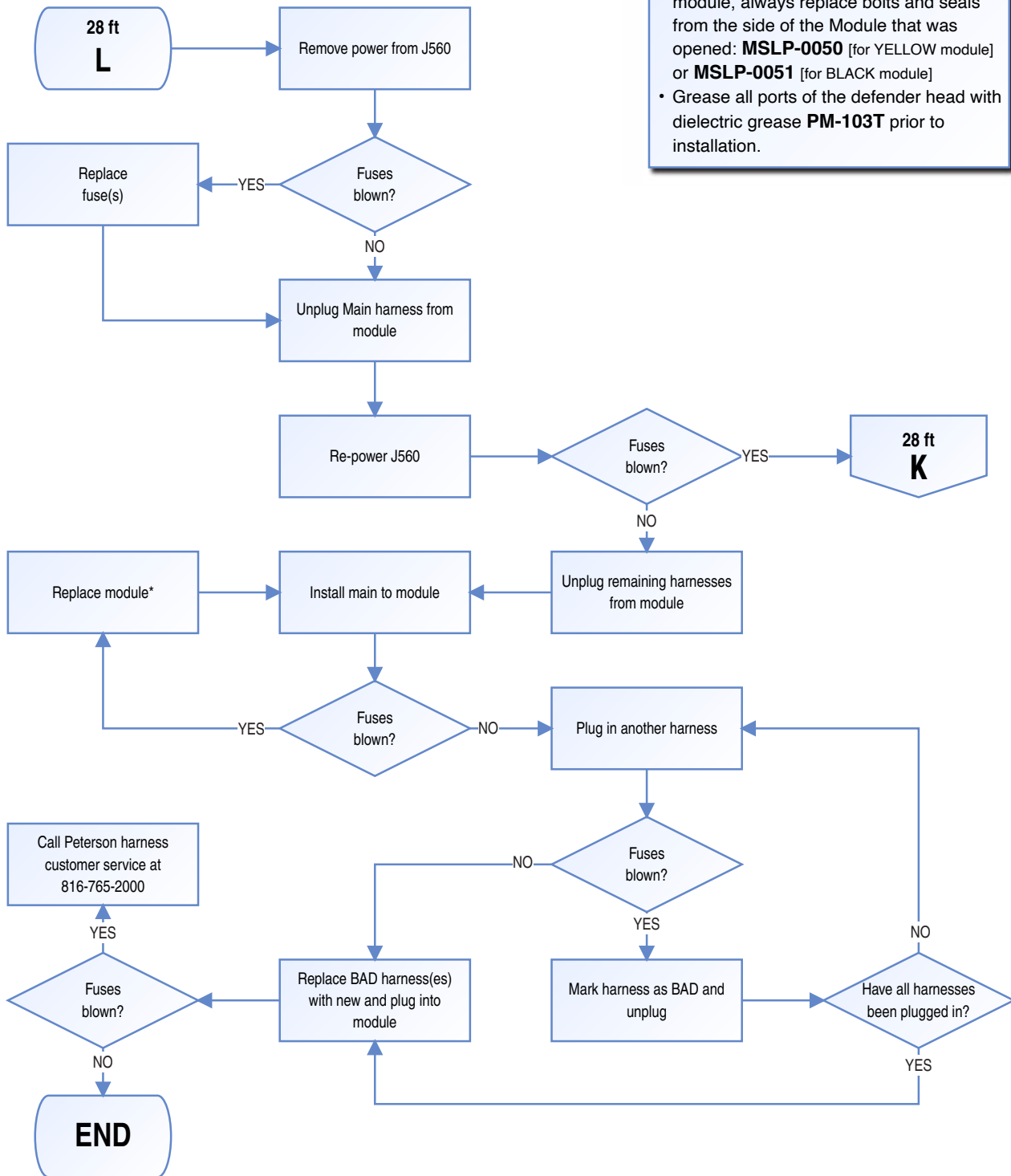
- Whenever unplugging a harness from the module, always replace bolts and seals from the side of the Module that was opened: **MSLP-0050** [for YELLOW module] or **MSLP-0051** [for BLACK module]
- Grease all ports of the defender head with dielectric grease **PM-103T** prior to installation.





*IMPORTANT!

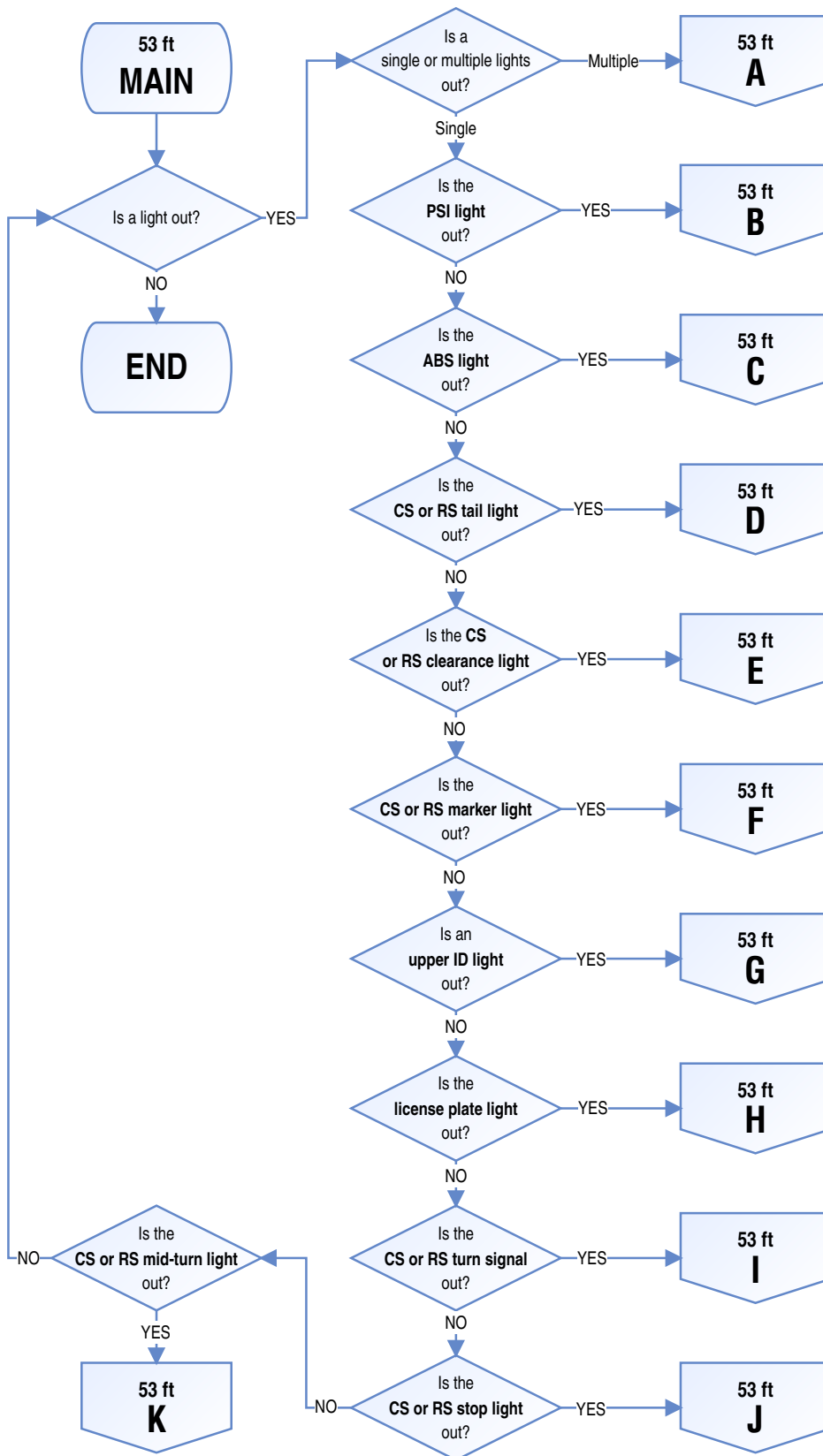
- Whenever unplugging a harness from the module, always replace bolts and seals from the side of the Module that was opened: **MSLP-0050** [for YELLOW module] or **MSLP-0051** [for BLACK module]
- Grease all ports of the defender head with dielectric grease **PM-103T** prior to installation.

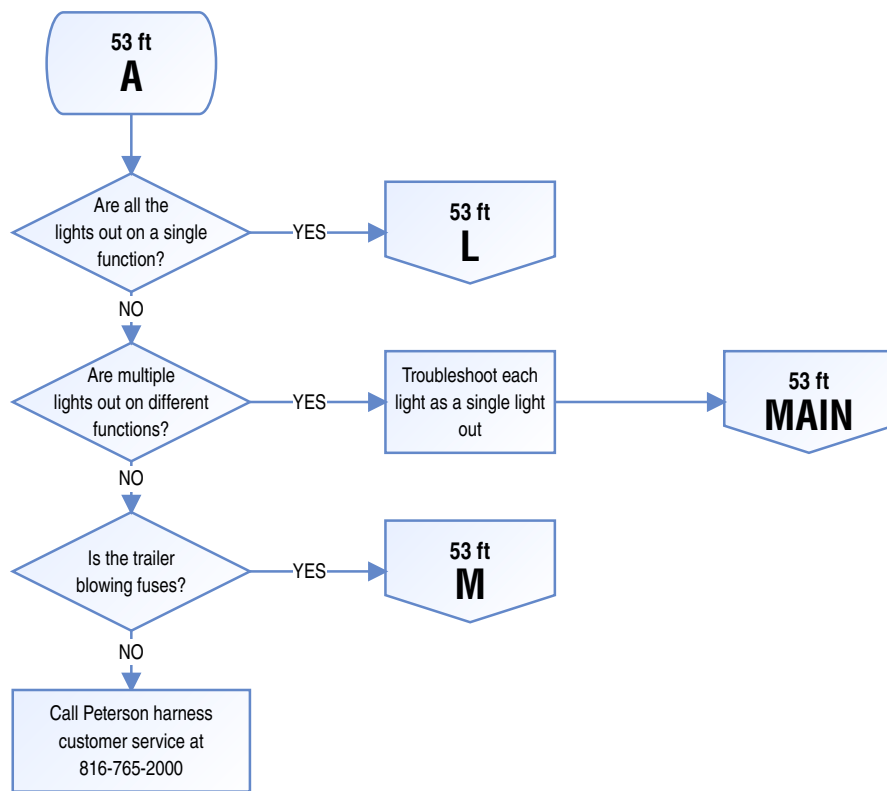


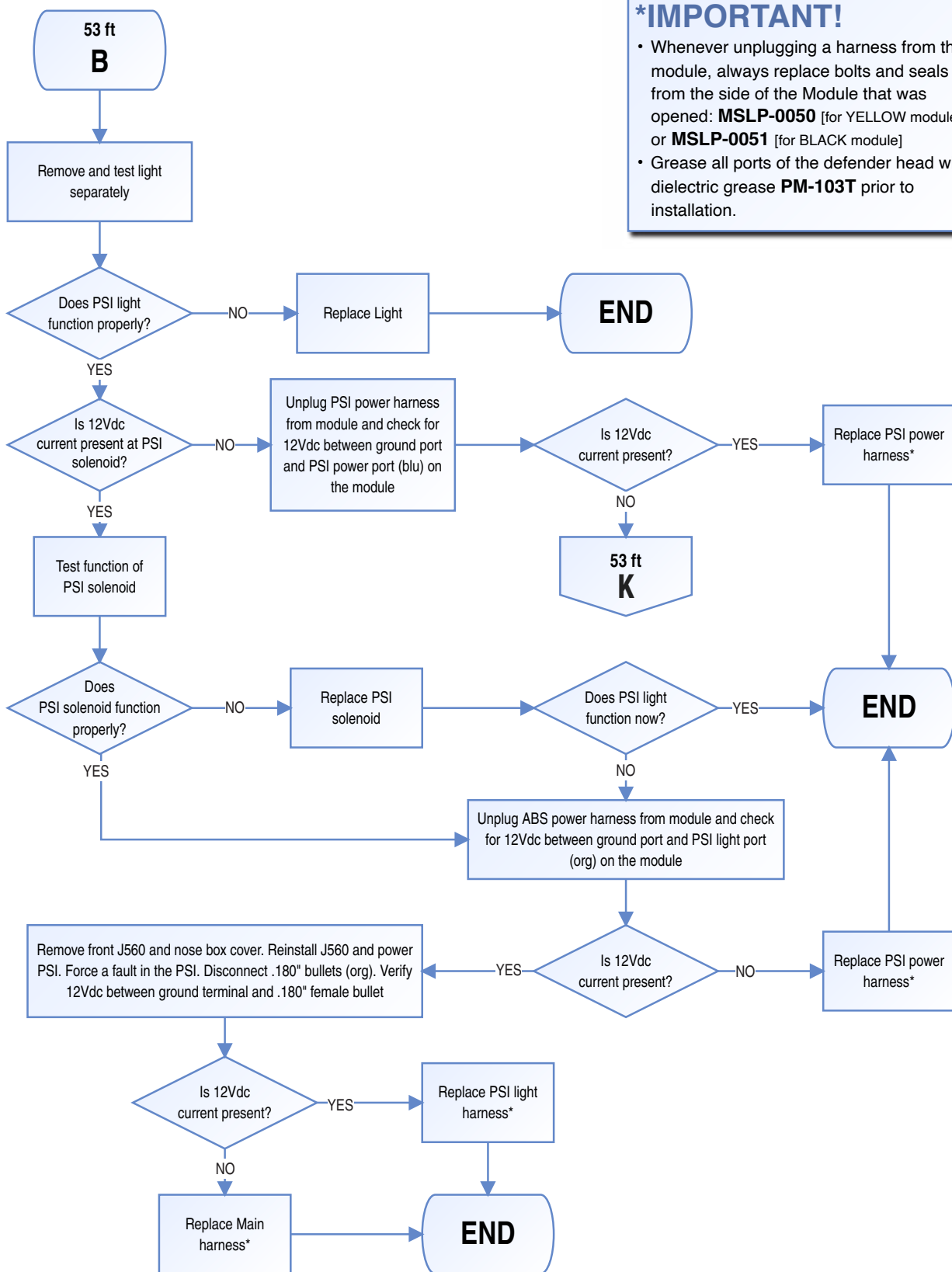


Section 3

Troubleshooting Guide for 53' Straight Frame Trailers

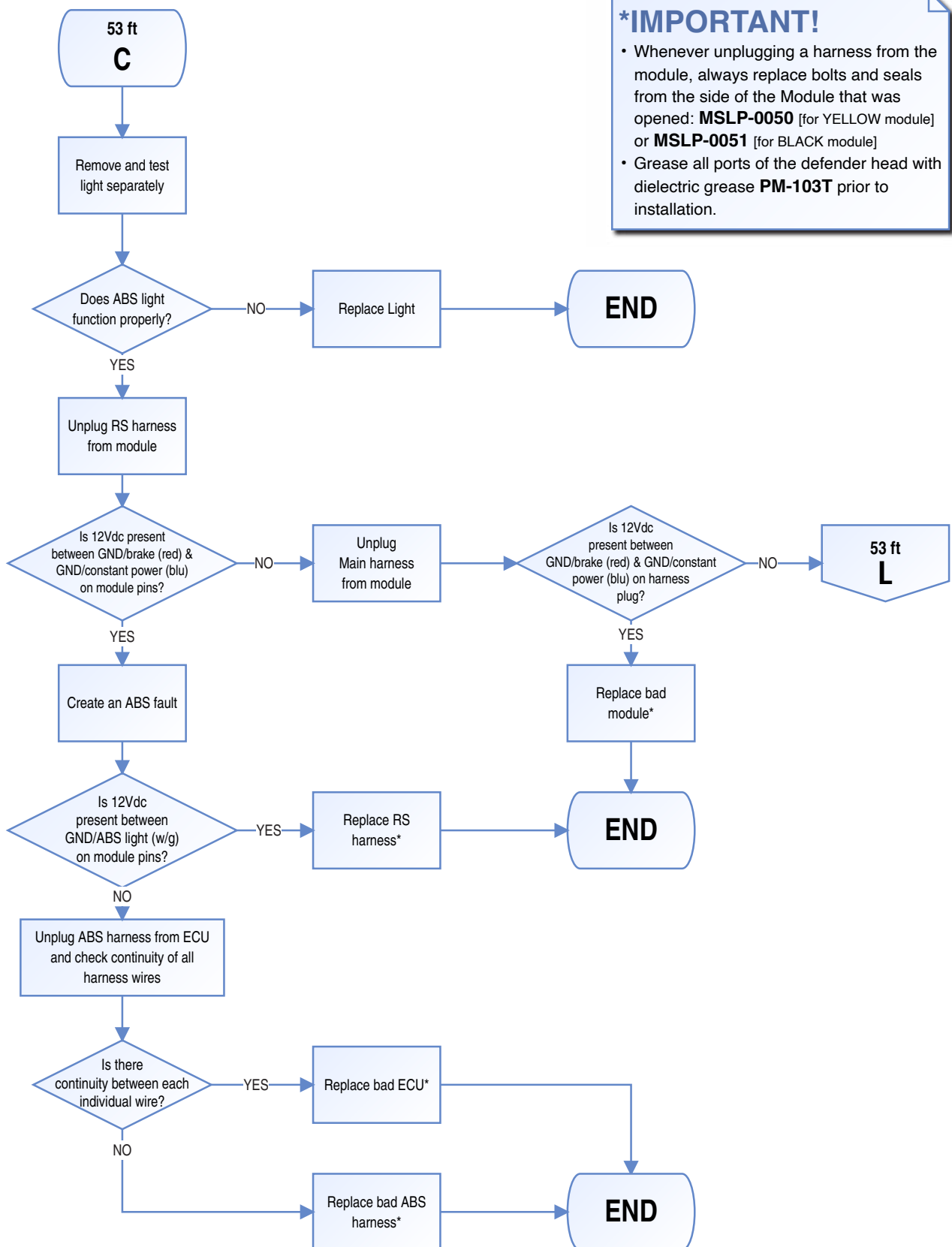






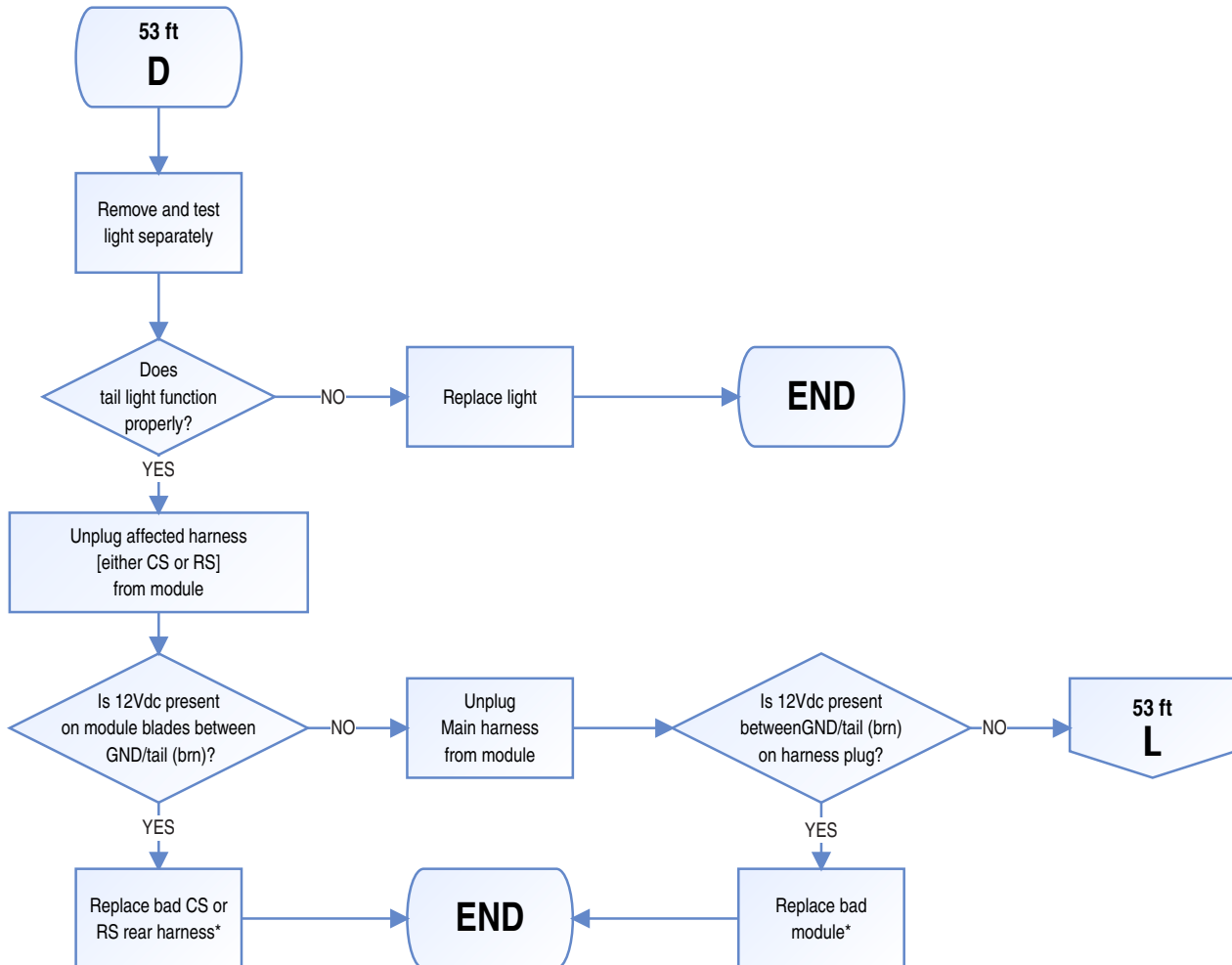
*IMPORTANT!

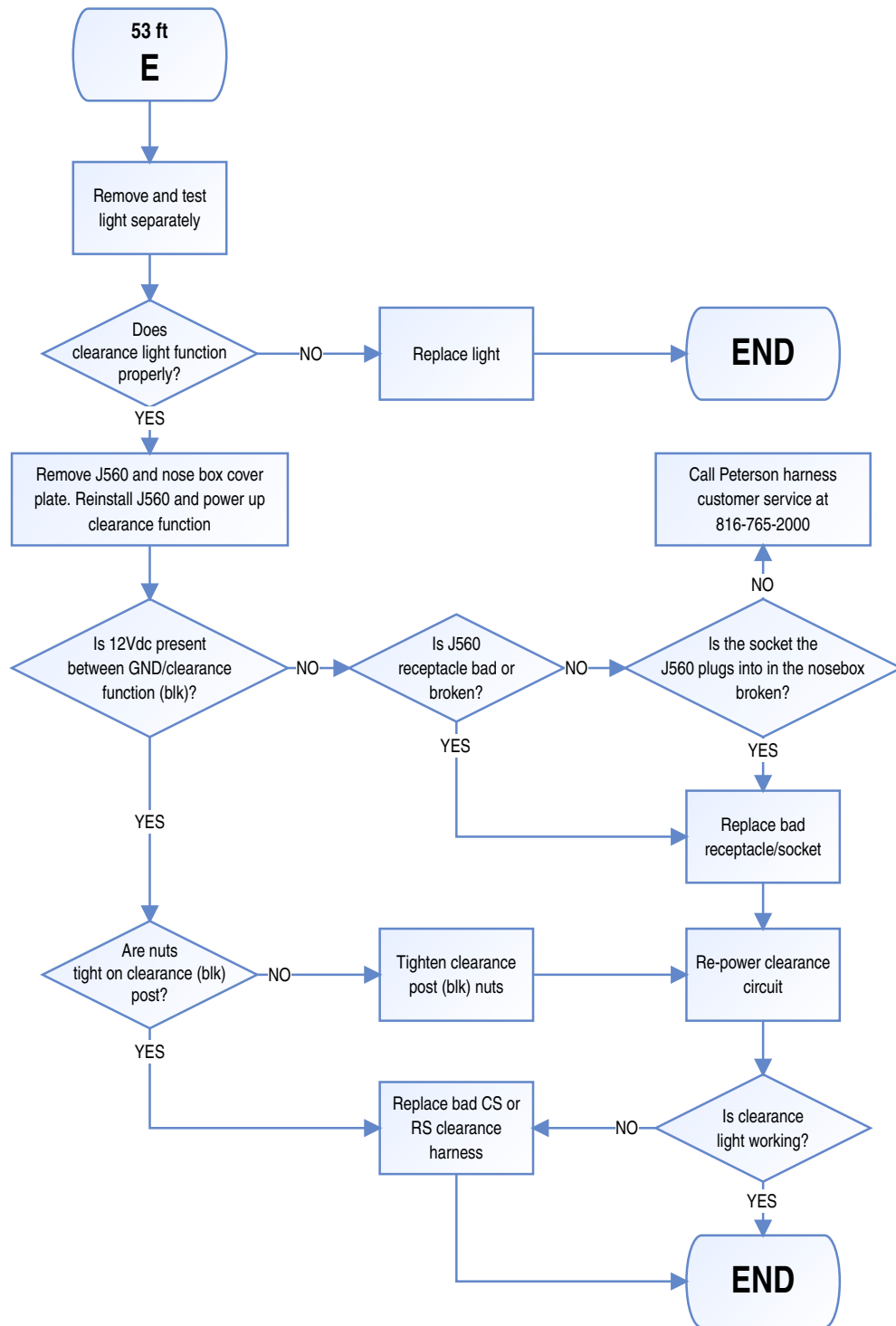
- Whenever unplugging a harness from the module, always replace bolts and seals from the side of the Module that was opened: **MSLP-0050** [for YELLOW module] or **MSLP-0051** [for BLACK module]
- Grease all ports of the defender head with dielectric grease **PM-103T** prior to installation.



*IMPORTANT!

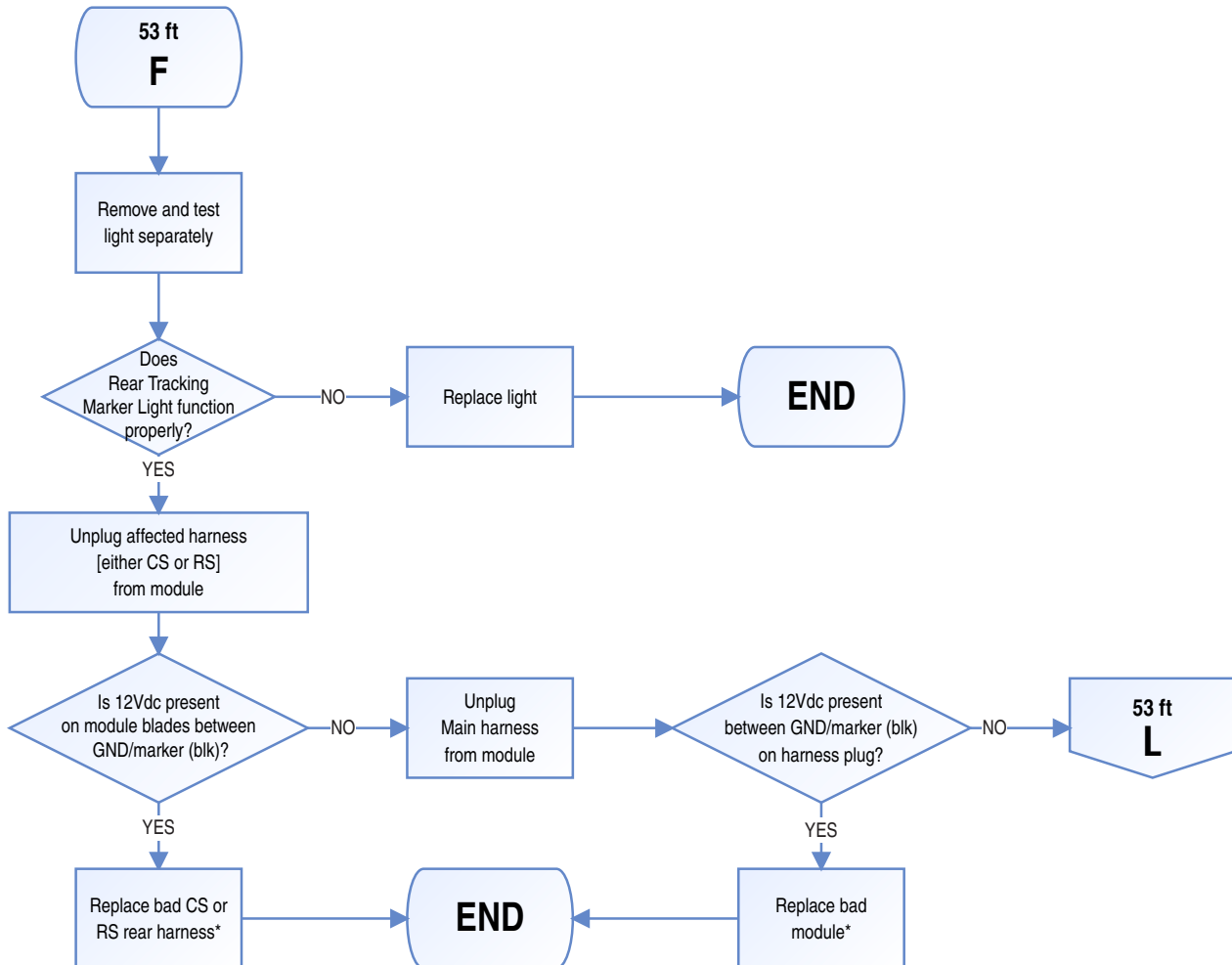
- Whenever unplugging a harness from the module, always replace bolts and seals from the side of the Module that was opened: **MSLP-0050** [for YELLOW module] or **MSLP-0051** [for BLACK module]
- Grease all ports of the defender head with dielectric grease **PM-103T** prior to installation.





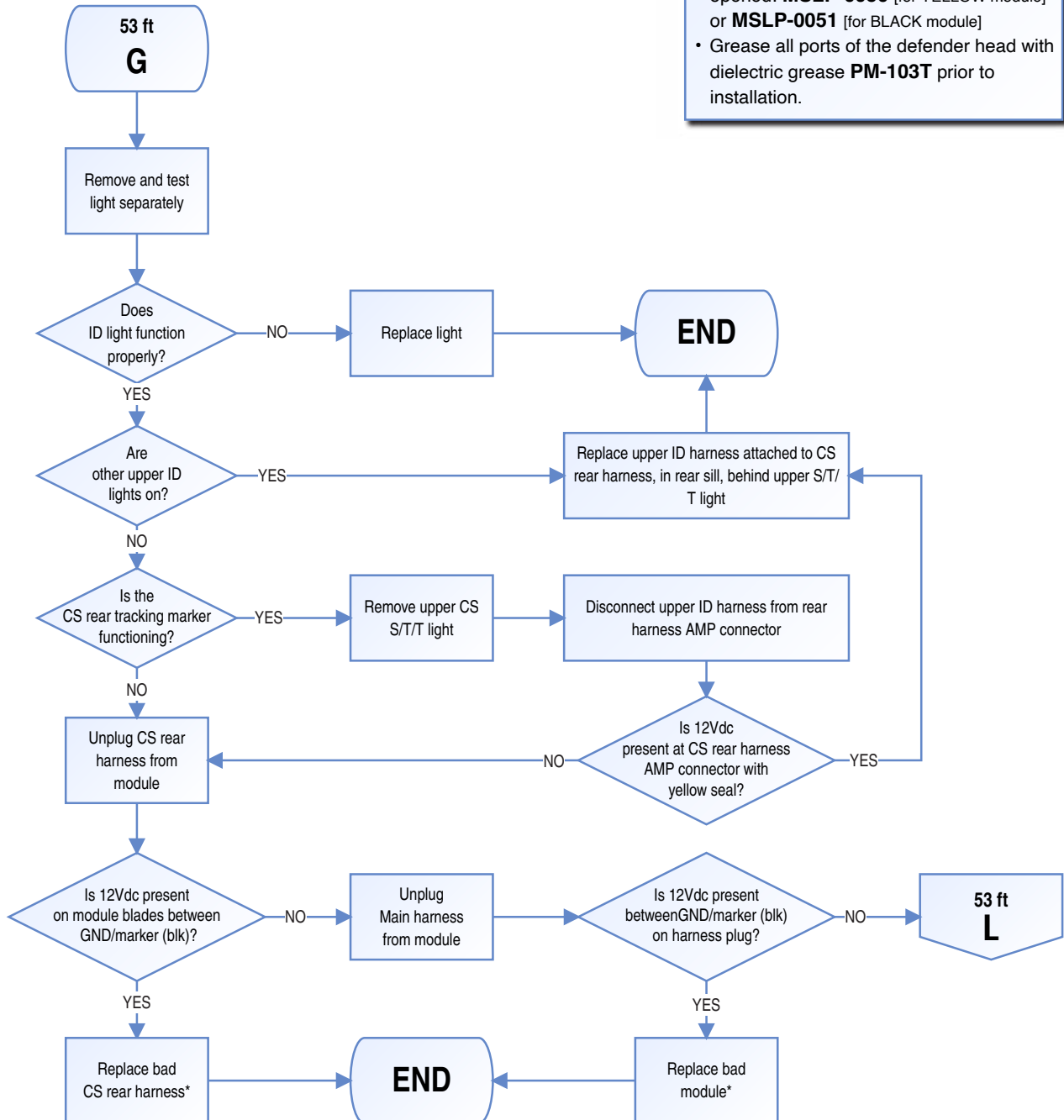
*IMPORTANT!

- Whenever unplugging a harness from the module, always replace bolts and seals from the side of the Module that was opened: **MSLP-0050** [for YELLOW module] or **MSLP-0051** [for BLACK module]
- Grease all ports of the defender head with dielectric grease **PM-103T** prior to installation.



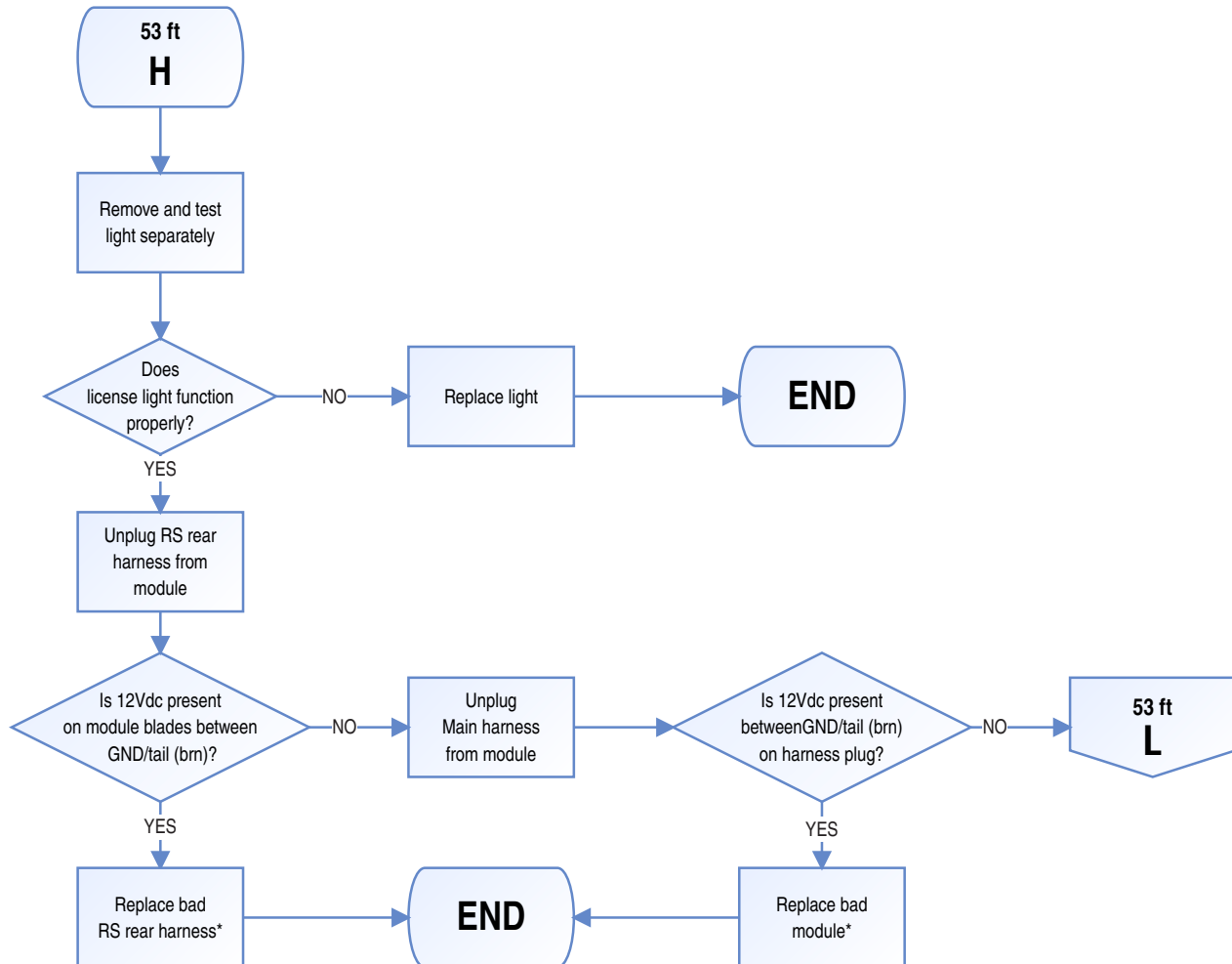
*IMPORTANT!

- Whenever unplugging a harness from the module, always replace bolts and seals from the side of the Module that was opened: **MSLP-0050** [for YELLOW module] or **MSLP-0051** [for BLACK module]
- Grease all ports of the defender head with dielectric grease **PM-103T** prior to installation.



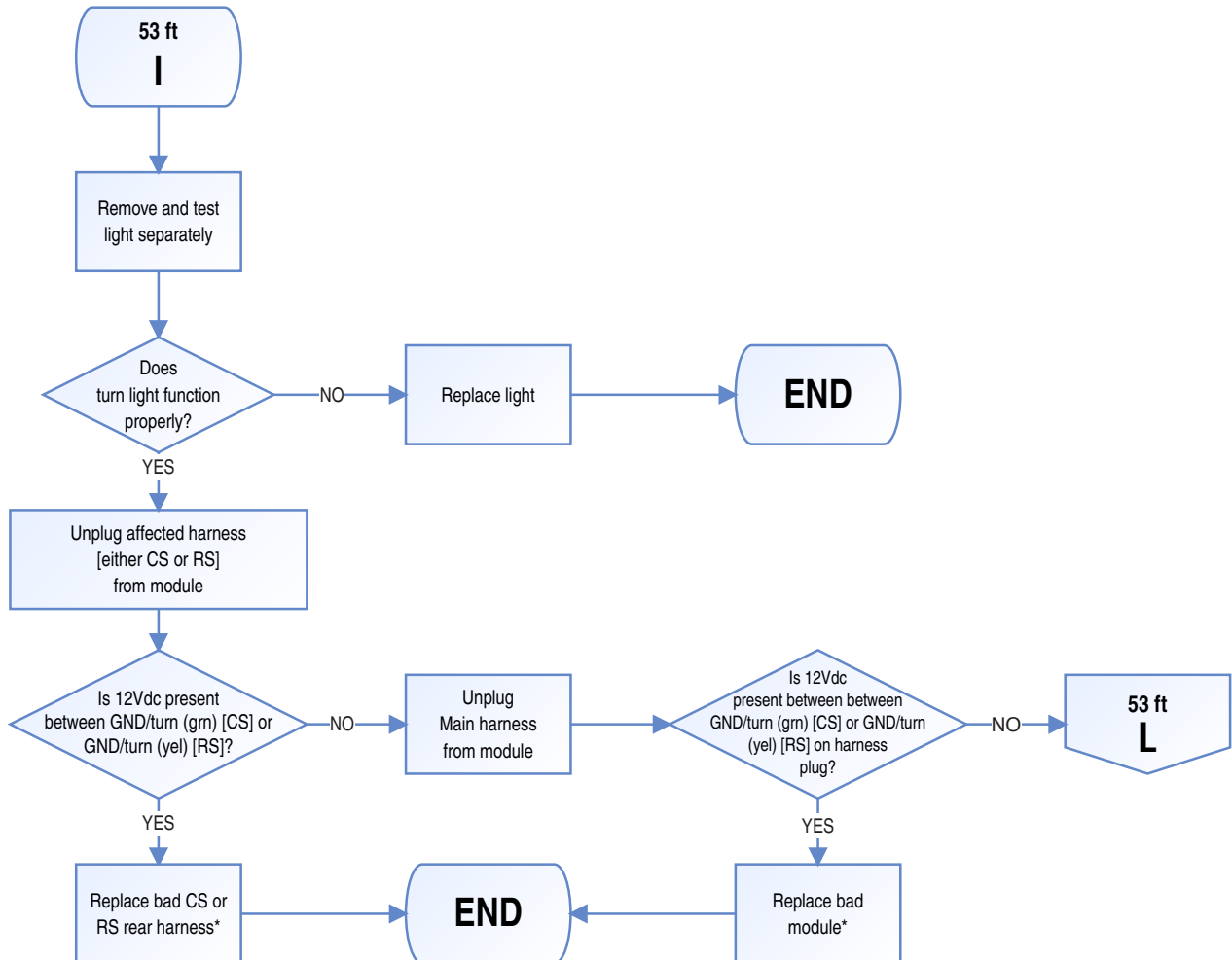
***IMPORTANT!**

- Whenever unplugging a harness from the module, always replace bolts and seals from the side of the Module that was opened: **MSLP-0050** [for YELLOW module] or **MSLP-0051** [for BLACK module]
- Grease all ports of the defender head with dielectric grease **PM-103T** prior to installation.



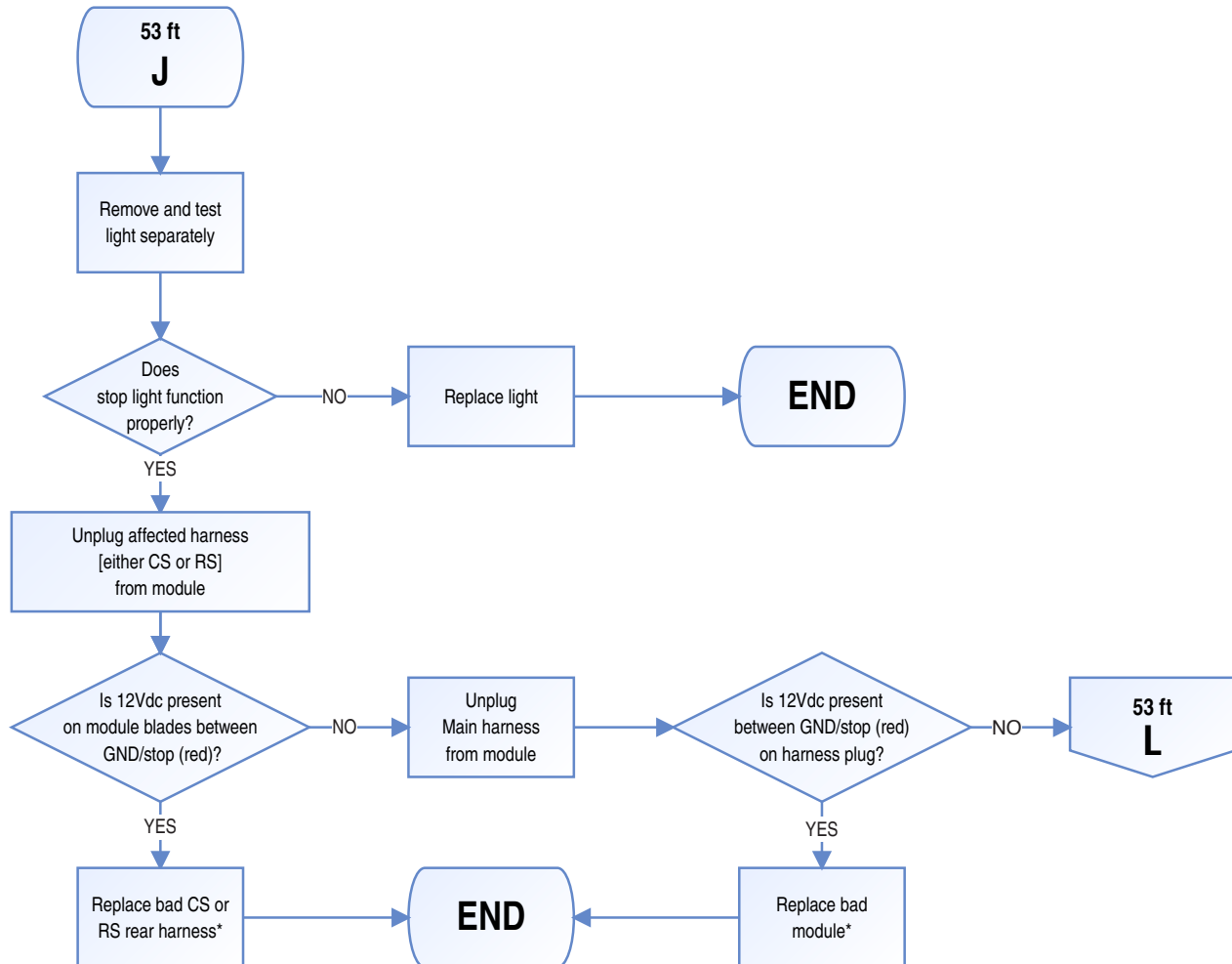
*IMPORTANT!

- Whenever unplugging a harness from the module, always replace bolts and seals from the side of the Module that was opened: **MSLP-0050** [for YELLOW module] or **MSLP-0051** [for BLACK module]
- Grease all ports of the defender head with dielectric grease **PM-103T** prior to installation.



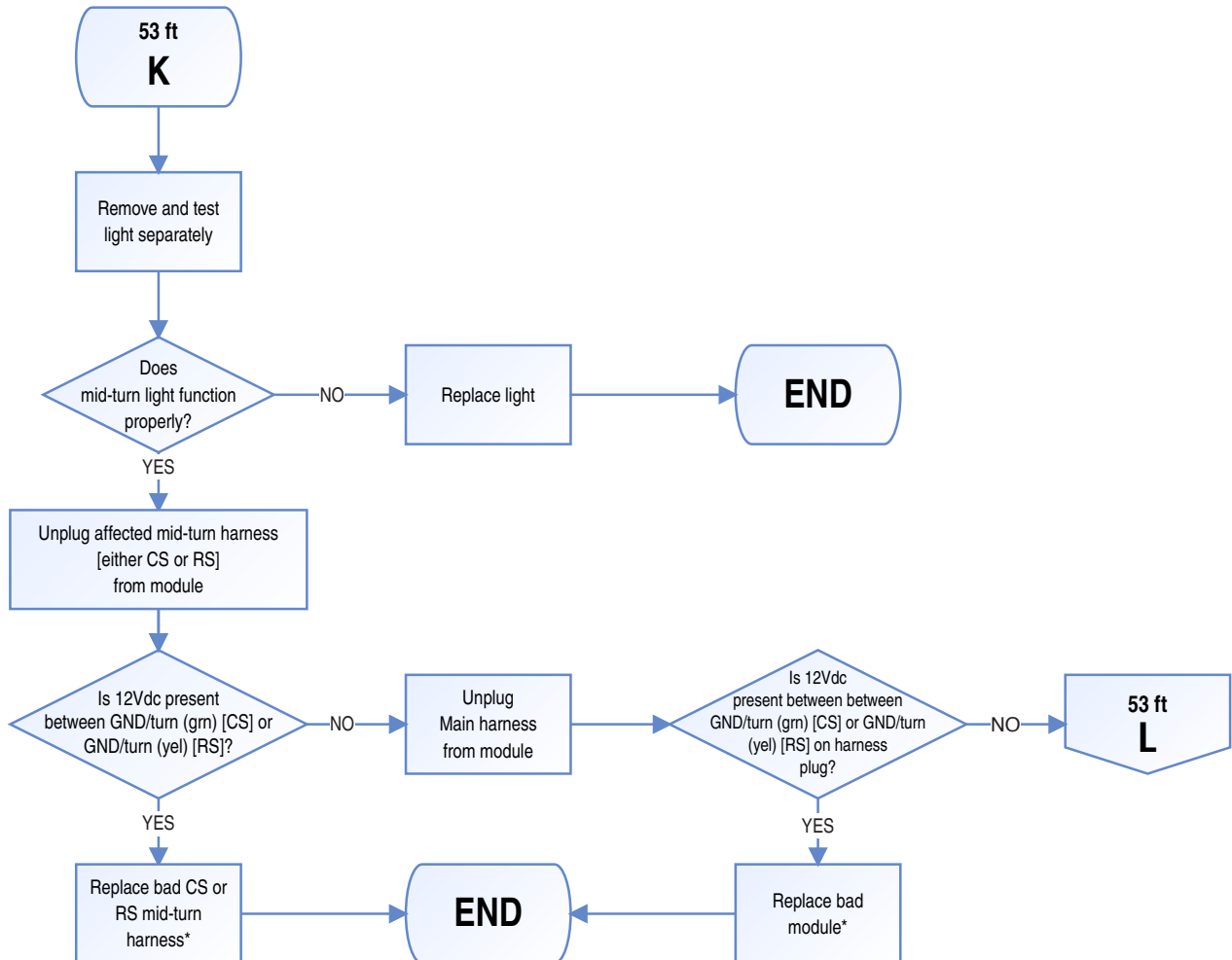
*IMPORTANT!

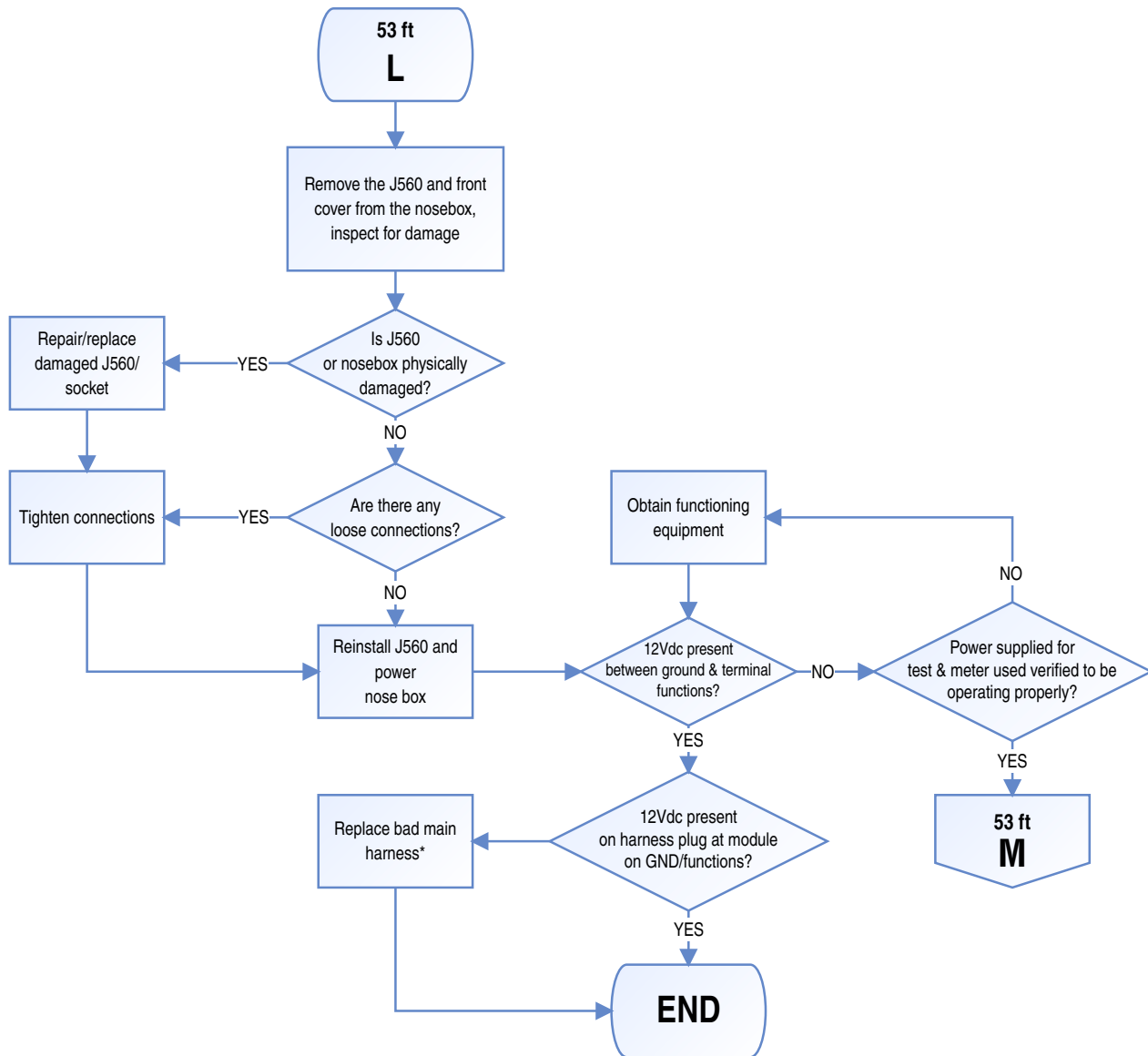
- Whenever unplugging a harness from the module, always replace bolts and seals from the side of the Module that was opened: **MSLP-0050** [for YELLOW module] or **MSLP-0051** [for BLACK module]
- Grease all ports of the defender head with dielectric grease **PM-103T** prior to installation.



*IMPORTANT!

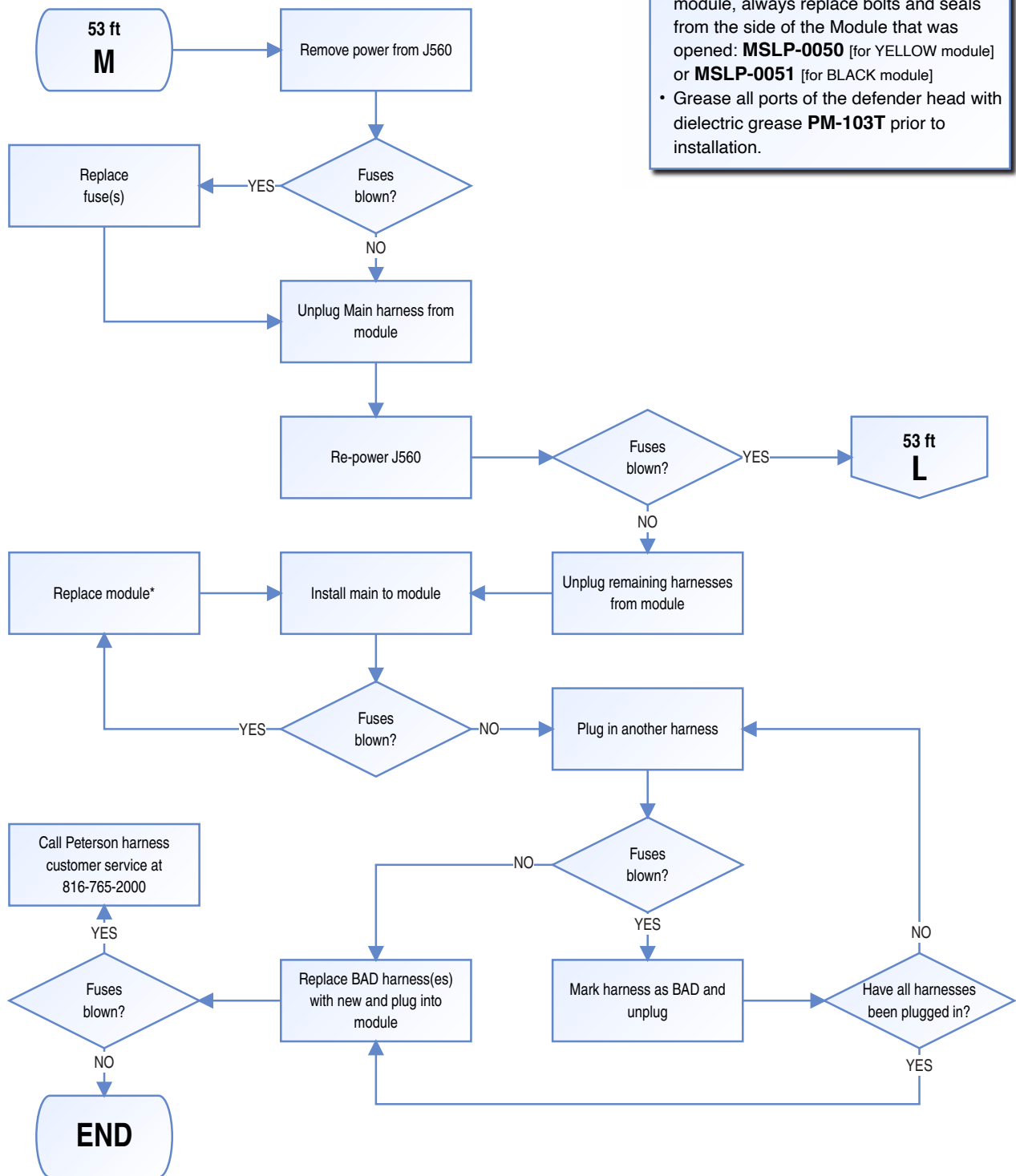
- Whenever unplugging a harness from the module, always replace bolts and seals from the side of the Module that was opened: **MSLP-0050** [for YELLOW module] or **MSLP-0051** [for BLACK module]
- Grease all ports of the defender head with dielectric grease **PM-103T** prior to installation.





*IMPORTANT!

- Whenever unplugging a harness from the module, always replace bolts and seals from the side of the Module that was opened: **MSLP-0050** [for YELLOW module] or **MSLP-0051** [for BLACK module]
- Grease all ports of the defender head with dielectric grease **PM-103T** prior to installation.





PETERSON

VEHICLE SAFETY LIGHTING

www.pmlights.com

4200 East 135th Street • Grandview, MO 64030
Phone (816) 765-2000 • Fax (816) 761-6693